



---

# City of Sun Prairie Sustainability Committee

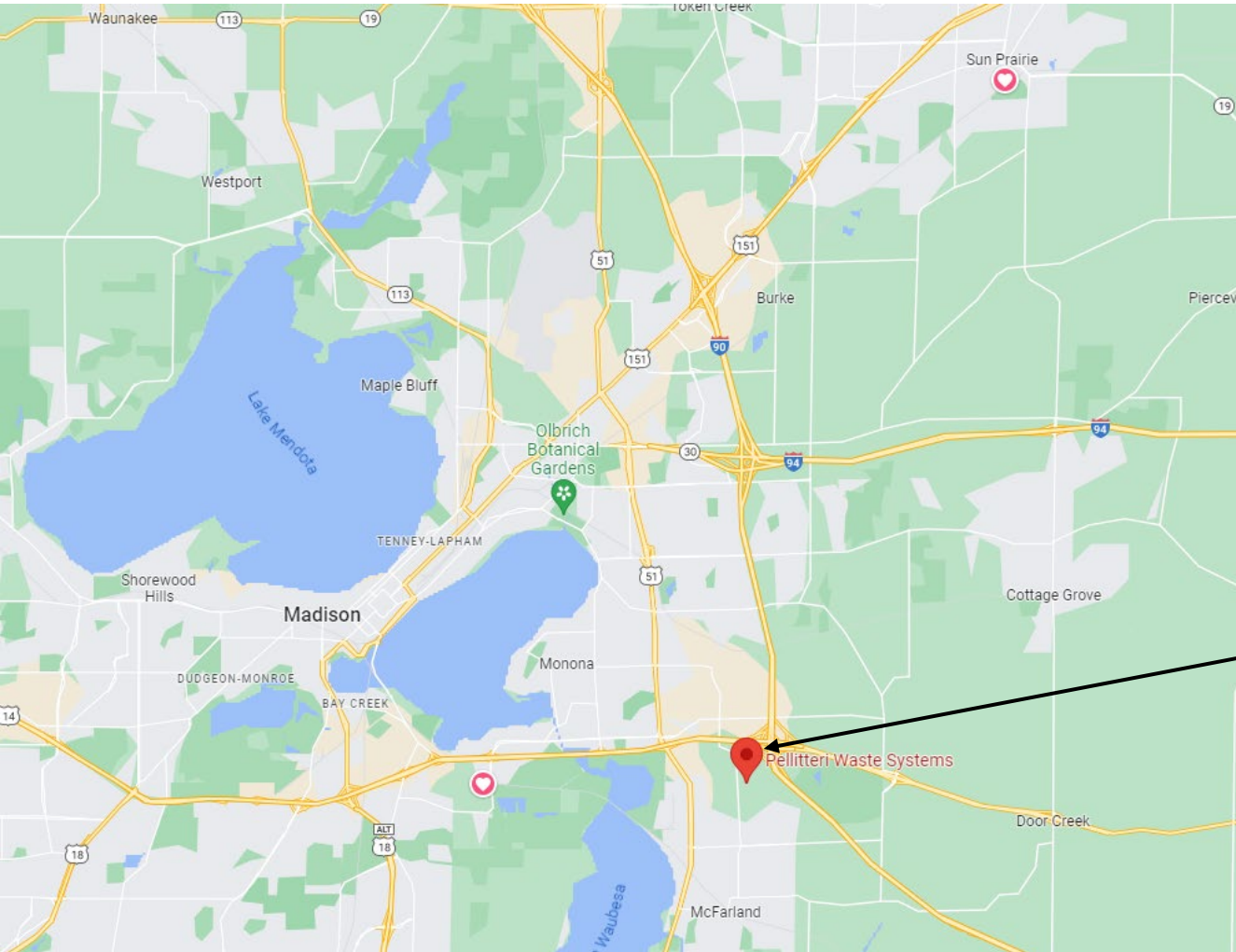
- Recycling information and current program updates -

Presented by :  
Todd Bollenbach  
Municipal Account Executive  
Pellitteri Waste Systems

# OUTLINE

- **Kipp Street Station MRF (Material Recovery Facility)**
- **Expanded list of recyclables & recent improvements to Kipp Street**
- **What happens to your recycling?**
- **Contamination & “Wishcycling”**
- **Resources**
- **New Pellitteri app**
- **Summary of Sun Prairie’s current recycling program**

# Pellitteri's Kipp Street Station MRF



When Sun Prairie's recycling is picked up, it's delivered to Pellitteri's MRF (Material Recovery Facility) – Kipp Street Station.

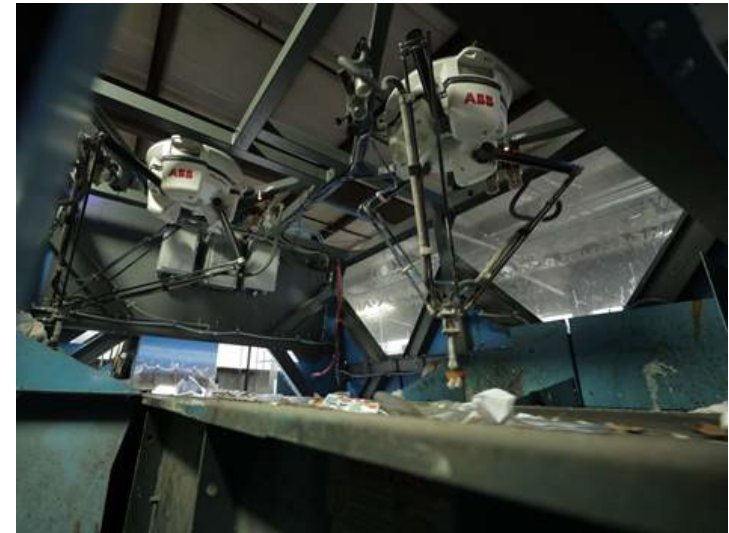
At our MRF, recyclables are sorted, contaminants are removed, and baled out to be made into new products.

Our Kipp Street MRF is located at  
4002 Kipp Street, Madison, WI.

***Pellitteri***  
WASTE SYSTEMS

## ~ Recent Improvements to Kipp Street ~

- We're constantly adding new technology to our system that will further separate smaller OCC boxes from the mixed paper stream.
- We've added more sorting technology to enhance the plastic sorting capabilities. This project focused on capturing more of the recycling containers that are not properly prepared.



- Though the use of AI and robotics, we're able to capture and sort more recyclables, and do so more efficiently.
- Additionally, we received a grant from the Paper cup institute to implement and promote paper cup recycling within our curbside program.



## Expanded List of Recyclables

Pellitteri Waste Systems sorts and processes multiple items that are not currently required by state law, and has been able to expand our list of acceptable items to include such things as:

- Hot and cold paper cups (to-go coffee cups) & Plastic take-out cups #1-7
- Paper milk and juice cartons
- Metal pots and pans
- Shredded paper (placed in clear plastic bags)
- Small metal appliances such as toasters, blenders, etc. (noting containing a battery though)
- Small metal plumbing fixtures
- Tin and steel cans

# What actually happens to your recyclables?



**Glass** – Glass is sent to Strategic Materials to be made into new glass bottles, and they have recognized Pellitteri as producing the cleanest glass in Wisconsin, and some of the cleanest in the country. We proudly recycle 100% of the glass we bring in.

**Paper/Cardboard** – Paper and OCC goes to 3-4 different processors in Wisconsin and Indiana, where it's made into tissue, and new cardboard products. You can literally have your recycled cardboard box back on your front porch within days of recycling it in the first place! Very quick turn...

**Metal** – We work with two Madison companies (Alter Metals & All Metal) where they're melted down to make new metal products.

**Aluminum** – Aluminum cans/products are recycled and made into new cans. There are multiple locations those are sold to.

**Plastics** – We send our HDPE natural plastics (#2) to Michigan or Alabama to get made into new colored bottles. In turn, our colored bottles go to Iowa where they're made into black drainage tiles for construction & farm fields, plastic lumber, and landscape edging. Our PETs (#1) are optically sorted and can be made into new bottles and are currently being made into carpeting.

Our #3-7 plastics will go to Brightmark, where they're being made into wax, oils and liquid gas. #5 Polypropylene is optically sorted, ground up into pellets, and made into new PP products.

## ~ Contamination Issues ~

- Contamination issues continue to be an ongoing struggle and it's imperative we keep our recycling as clean as possible. With community support and ongoing education, we're working towards lower numbers.
- This is why it's important to place only acceptable items in the carts and to keep the lid shut on your cart/dumpster.
- If we can't give the end-user good materials, they may stop accepting the material. If we don't have a home for materials, we are not able to accept them.



# “Wishcycling”

- “Wishcycling” is when you recycle an item because you wish it were recyclable, even though it is not. While we wish every item could be recycled, this is not the case.
- In fact, when you recycle an item incorrectly, it can contaminate the recycling stream and cause properly prepared recyclable items to be taken to the landfill.
- When in doubt... throw it out. But please check out our “Recycle Right” tool to check to see what is recyclable by visiting [Pellitteri.com](http://Pellitteri.com) or downloading our new app.



## Resources



### Are Electronics Recyclable?

Yes, but they cannot be put in your recycling cart or recycling dumpster as they need to be brought to specific locations to be recycled.



### Are Batteries and Propane Tanks Recyclable?

We cannot recycle batteries or propane tanks at our facility. Lithium ion batteries and propane tanks can cause sparks that will start fires in our vehicles and our facility.



### You're Recycling Wrong!

Cardboard boxes are ready for recycling when they are empty, dry, clean, and flat. Dirty frozen-food containers and take-out boxes are not recyclable. If you place your recycling in bags, remember to use clear or transparent bags only.



### TetraPak

Empty and put the caps back on juice cartons and other TetraPak packaging items for recycling.



### What Happens To My Recycling

Items are sorted and shipped to manufacturers locally or in the Midwest to make new products.



### Do We Actually Recycle Your Recyclables

Yes, absolutely. We use specialized state-of-the-art machinery and employees that sort clean recyclables so they can be recycled into new products. (We need your help keeping recycling clean and free from contaminants.)

- There's over 30, 1-minute "how-to" recycling videos on our website, [www.Pellitteri.com](http://www.Pellitteri.com)
- Dedicated webpage for Sun Prairie residents <https://www.pellitteri.com/pages/city-of-sun-prairie>
- City of Sun Prairie's recycling page, <https://cityofsunprairie.com/1707/Recycling-Recycle-Center-Information>



# SUN PRAIRIE

## What can I recycle?

Download our mobile app to learn how to recycle or dispose of materials. You can also see your collection schedule and receive reminders so you never miss recycling day again!



[pellitteri.com/RecycleRight](https://www.pellitteri.com/RecycleRight)



Learn if materials  
can be recycled



See your waste  
collection schedule



Receive collection  
day reminders

Download our mobile app under Pellitteri Waste Systems



## NEW Pellitteri Ap and our Interactive “Recycle Right” tool

- Our recycle right tool is available on both our website, as well as our new app! *(link to website listed below)*
- Search what is and what isn't recyclable, as well as alternative options for those items that we don't accept

<https://www.pellitteri.com/pages/residential-recycling#recyclerright>

The screenshot shows the 'Recycle Right' web application interface. At the top, there is an orange header with the title 'Recycle Right' and a 'Share' button. Below the header are three navigation icons: 'Calendar', 'Recycle Right' (which is highlighted with an orange underline), and 'Need help?'. The main content area features a search prompt: 'Type the name of a waste item and we'll tell you how to recycle or dispose of it.' Below this is a search input field and an orange 'Search' button. Underneath the search bar is a 'Featured Searches' section with four circular icons and labels: 'Lithium-Ion Battery', 'Battery (Disposable)', 'Plastic Bag', and 'Television'. At the bottom right of the page, there are links for 'Privacy | Terms of Service | Cookie Policy'.

## City of Sun Prairie's Residential Trash and Recycling Tonnages:

### 2022 Totals (every other week recycling)

#### TRASH

- Yearly TRASH Total: 17,476,429-lbs (8,738 tons)
- Monthly Average: 1,456,429-lbs (728 tons)
- Monthly "Per Home" Trash Average: 136-lbs

#### RECYCLING

- Yearly RECYCLING total: 5,254,620-lbs (2,627 tons)
- Monthly Average: 437,885-lbs (219 tons)
- Monthly "Per Home" Recycling Average: 40-lbs

## City of Sun Prairie Trash and Recycling Tonnages:

### 2023 Totals (with WEEKLY recycling)

#### TRASH

- Monthly Average: 1,391,298-lbs (695 tons)
- Monthly “Per Home” Average: **127-lbs**

#### RECYCLING

- Monthly RECYCLING Average: 481,435 (240 tons)
- Monthly “Per Home” Average: **44-lbs**

We haven't even started the holiday season, which should affect the numbers relatively significantly...

*\* annual tonnages not available, as we only have 8 months of data through 2023 \**



What does that mean for the City of  
Sun Prairie?



# SUN PRAIRIE

- The average household is approx. recycling an additional **4-lbs per month**  
(That is a 10% increase in recycling)
- The average household has shown an approx. reduction in trash of **8-lbs per month**
- In just 8 months of reporting, the City of Sun Prairie has kept an additional **520,000-lbs** out of the landfill!
- In that same timeframe, the City of Sun Prairie has produced an additional **350-000-lbs** of recycling

What we are seeing is that packaging continues to get lighter, but the volume is increasing. Things are continuing to weigh less but are taking up more space. So, being able to show such an increase in recycling and dip in trash is something the city can be proud of!



Thank you for your time!  
Any questions?