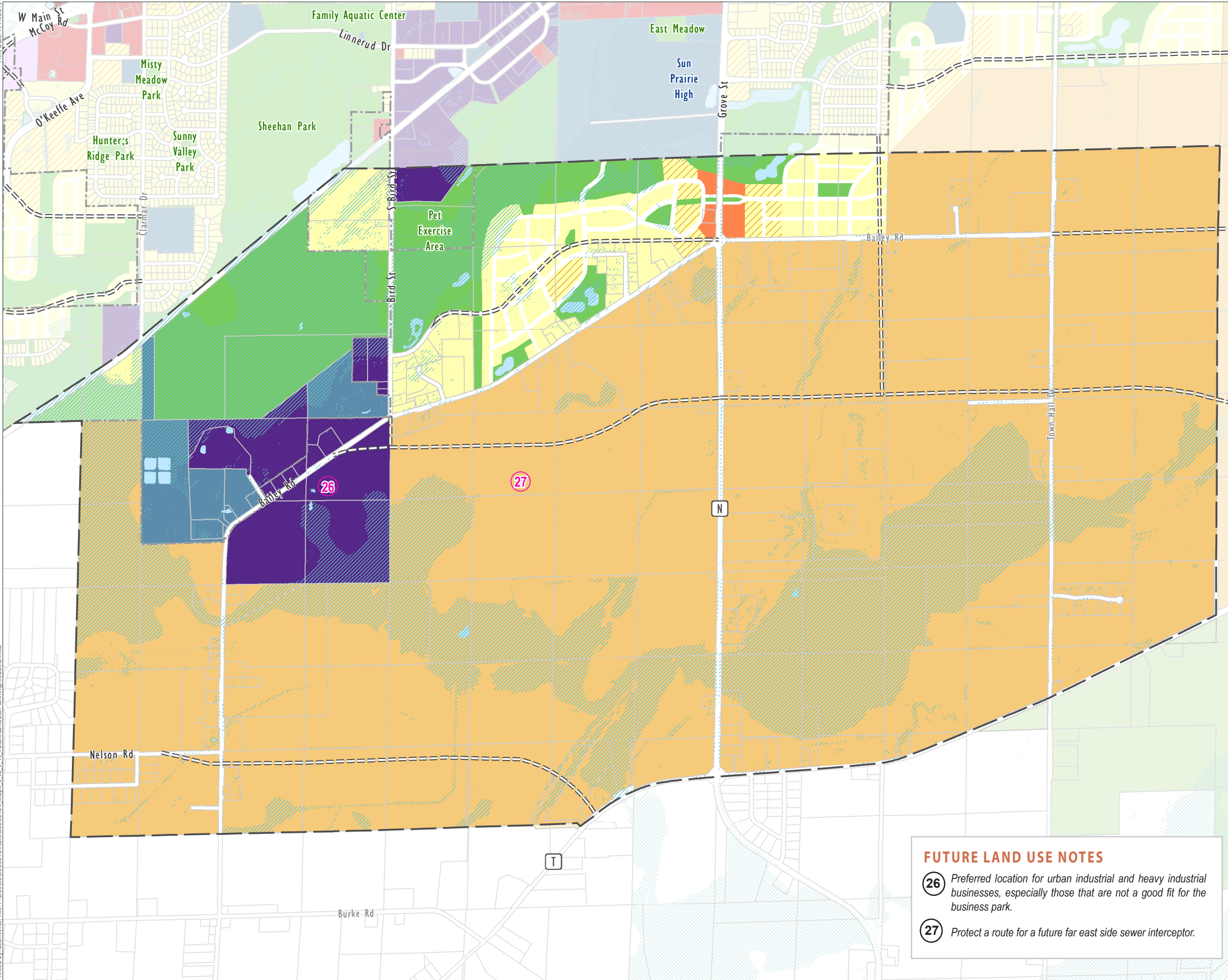


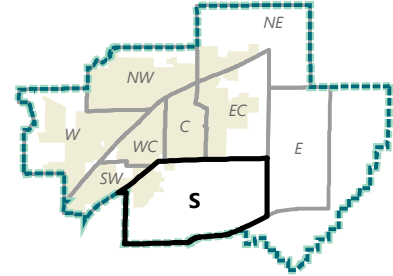
Print Date: 7/11/2019  
Printed By: aconverse, File: P:\305\36\00036184\GIS\00036184\_Map9\_5\_to\_9\_13\_FutureLandUsePlanningAreasMB.mxd



# Future Land Use SOUTH

- Planning Area
- Sun Prairie
- Natural Resource Protection Overlay
- Future Land Use (2019)
  - Neighborhood Residential
  - General Commercial
  - Neighborhood Mixed Use
  - Community Mixed Use
  - Downtown Mixed Use
  - Employment
  - Industrial
  - Institutional & Utilities
  - Parks & Open Space
  - Rural Lands
  - Urban Reserve
  - Water/Stormwater Facilities
  - High-Intensity Residential Overlay
  - Future Arterial/Collector

See Future Land Use Plan (in Volume II: Chapter 9) for map note descriptions.



Data Sources:  
Municipal Boundaries and road names provided by Dane County (May 2018).

**FUTURE LAND USE NOTES**

**26** Preferred location for urban industrial and heavy industrial businesses, especially those that are not a good fit for the business park.

**27** Protect a route for a future far east side sewer interceptor.