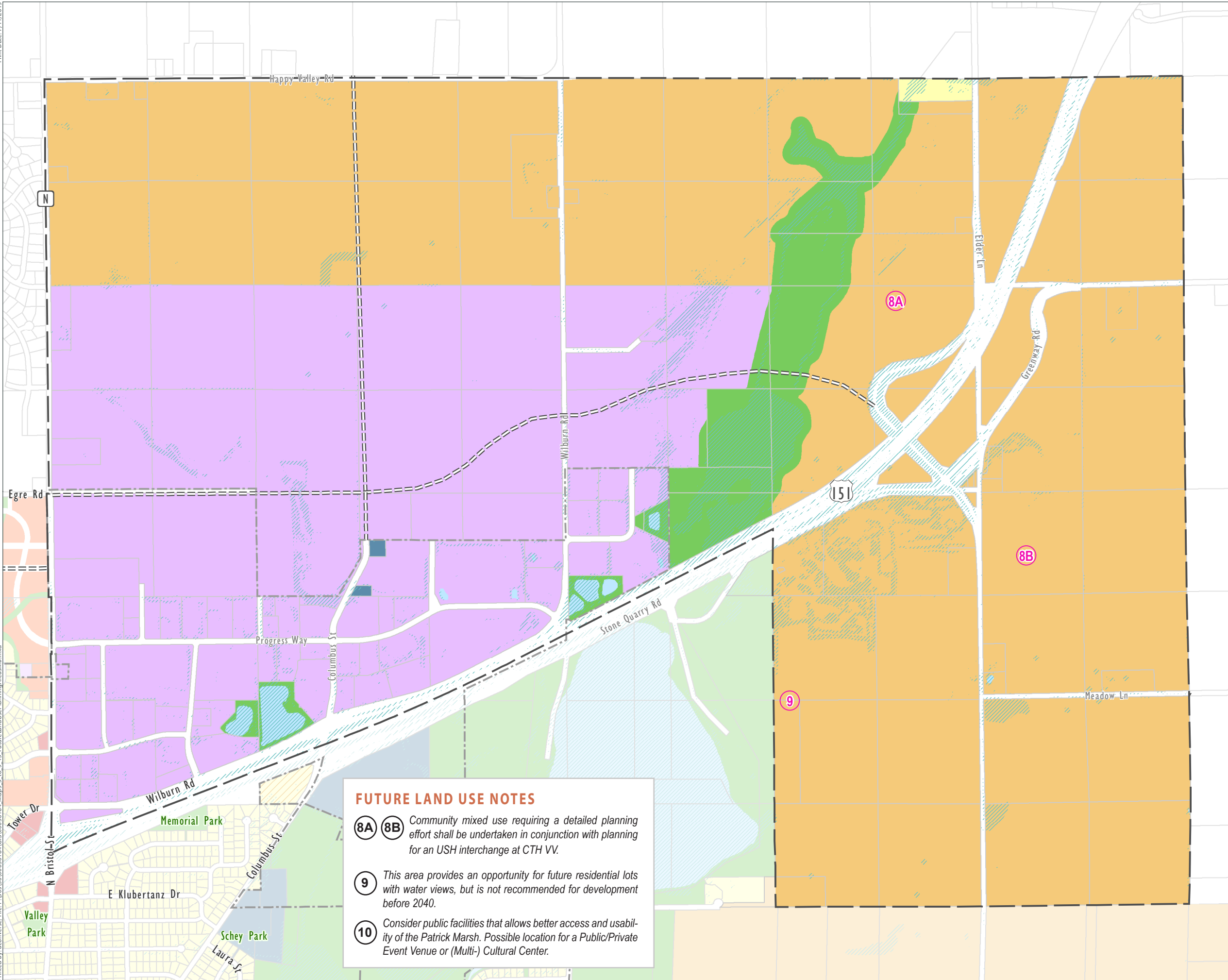
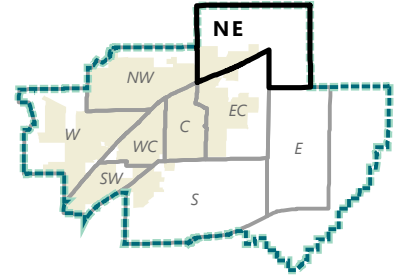


Future Land Use NORTHEAST



- Planning Area
- Sun Prairie
- Natural Resource Protection Overlay
- Future Land Use (2019)**
- Neighborhood Residential
- General Commercial
- Neighborhood Mixed Use
- Community Mixed Use
- Downtown Mixed Use
- Employment
- Industrial
- Institutional & Utilities
- Parks & Open Space
- Rural Lands
- Urban Reserve
- Water/Stormwater Facilities
- High-Intensity Residential Overlay
- Future Arterial/Collector

See Future Land Use Plan (in Volume II: Chapter 9) for map note descriptions.



Data Sources:
Municipal Boundaries and road names provided by Dane County (May 2018).

FUTURE LAND USE NOTES

8A 8B Community mixed use requiring a detailed planning effort shall be undertaken in conjunction with planning for an USH interchange at CTH VV.

9 This area provides an opportunity for future residential lots with water views, but is not recommended for development before 2040.

10 Consider public facilities that allows better access and usability of the Patrick Marsh. Possible location for a Public/Private Event Venue or (Multi-) Cultural Center.