

CITY OF SUN PRAIRIE
Comprehensive Plan 2019-2039

Neighborhood Forums Input

APPENDIX

C



MAY 2018 PUBLIC INVOLVEMENT MEETINGS SUMMARY

MSA facilitated three public involvement meetings to provide members of the community an opportunity to provide input on issues and opportunities facing the community as we begin the process to update the City's Comprehensive Plan. The three meetings were held:

- Monday May 14th, at Bird Elementary School.....22 people signed in.
- Thursday May 17th, at the Sunshine Place.....19 people signed in.
- Saturday May 19th, at City Hall.....31 people signed in.

Note that for each meeting the number of attendees was higher than the amount signed in as some individuals choose not to sign in or only one member of a couple or family signed in.

Each meeting included two public input activities, a visioning wall activity and a neighborhood-based issues and opportunities mapping activity. The following is a summary of the compiled results of each activity. Attached to this summary are copies of all public responses received at the three meetings.

Vision Wall Summary

Meeting participants were provided an opportunity to answer the following four questions:

1. What do you like best about Sun Prairie? 48 Total Responses.

Common words or themes that emerged include: the park system, library, school system, family friendly/sense of community, diversity of resources/amenities.

2. What do you like least about Sun Prairie? 63 Total Responses

Common words or themes that emerged include: growth of multi-family apartments; growing traffic congestion; lack of affordable housing; high taxes; lack of public transportation

3. What makes Sun Prairie unique? 26 Total Responses

The most frequently used words or themes that emerged include: small town feel yet close to larger city and country; growing community; existing festivals

4. *What are your big ideas and aspirations for our community? What would you change or improve?* 55 Total Responses

Common words or themes that emerged include: improve multi-modal transportation options both within the City and to Madison; more youth activities/community center, entertainment and dining options; the development of green space, parks, and trails; increased diversity

Neighborhood-Based Issues and Opportunities Mapping Activity

Meeting participants were provided an opportunity to identify locational-based issues and opportunities within six pre-defined neighborhoods by placing pre-numbered dots on maps of the city and describing issues and opportunities as they related to six pre-determined categories. The following is a brief summary of the number of comments received per neighborhood and per category. Maps displaying the location of comments, category of comment, and specific comment text are provide as an appendix to this report.

- A. *Bike/Pedestrian Improvements.*** Locations that you feel need a better connection or safety improvement for walking or biking (e.g., sidewalk, crosswalk, on-road bike lane, etc.)
- B. *Traffic Safety Concerns.*** Locations where you feel a current road is unsafe for motorists
- C. *Park Improvements.*** The one most improvement park improvement you would like to see
- D. *(Re)Development Sites.*** Existing sites or buildings you feel could be (re)developed over the next 10-20 years. Suggest a preferred use.
- E. *Preservation Sites.*** Existing uses, buildings or natural areas you feel should be preserved or left unchanged over the next 10-20 years.

Table Summary of Comments by Category by Neighborhood

Category	Northwest	West	Southwest	West Central	Central	East Central
A	10	5	7	5	19	5
B	17	14	2	9	20	10
C	5	33	0	9	5	4
D	4	7	2	11	7	5
E	1	3	0	1	4	5

What do you like BEST about Sun Prairie?

1	Retail and restaurants
2	Parks! Library (kids programs especially). Vibrant & growing.
3	Parks and play areas for children
4	Caring and involved community
5	Lots of parks & well kept public spaces
6	Love Sun Prairie as mix of old and new. Hope the plans for new, updated city continue.
7	Schools good overall. Police presence is good.
8	Parks are good. Snow removal is good.
9	Parks, schools.
10	The small town feel with the close proximity to Madison. School system.
11	I never lived in a city where the local enforcement was making an effort to reach out and make a positive change in someone's live. Also plenty of parks and with geometry designed into it.
12	I like the involvement of the residents. We have pride in our city & school system. We're concerned about all ages & stages of life.
13	People friendly
14	Everything we need is in town. Downtown. Neighborhoods w/ parks.
15	Small city atmosphere with local character
16	Access to basic services and shopping (don't have to go to the west side of Madison of Madison anymore). Commitment to diversity.
17	Small town fell. Events in Cannery Square (builds community). Farmers market - expand w/ a permanent venue space.
18	Quiet neighborhood. Friendly neighborhoods.
19	The people. Number of parks. Library. Schools.
20	Library. Prairie Health Club. Multiple parks. School system. Movie Theatre.
21	Library, parks, downtown.
22	Sense of community. Library. Parks.
23	Community oriented. School system. Good mix of businesses. Growth. Police/fire/EMS. Social services (Sunshine Place, Food Pantry, Colonial Club, Etc.)
24	Library. Cannery Square. Ability to bicycle from our house to the library and grocery store.
25	The school system, but needs improvements for children of color, especially African Americans.
26	When we can have meetings about our concerns.
27	Library. Walmart.
28	PAC. Family Video. Library. Grocery stores.
29	Library. Parks. Good schools - for now. Proximity to Madison. Utility routes.
30	Small town with a city view.
31	The resources that are in Sun Prairie
32	Everything is close.
33	Variety of things to do.
34	Good schools.
35	Growth while maintaining community feel. Public library. Great schools.
36	Music programs in schools. Arts programs. Sports programs.
37	Progressive redevelopment ideals.
38	Growing town investing in the future.
39	Becoming more diverse.
40	Cannery square. The Family Aquatic Center.
41	SP is a nice, safe community.
42	Food options (always could be more). Downtown atmosphere. Can't wait for the brewery access to Madison.
43	Great parks, wonderful library, lots of great municipal amenities. Small town feel with big city services.
44	Public Library. Parks. Public pool. PAC. Schools.
45	Its potential & community commitment.
46	It's family friendly: Great schools, great resources, neat opportunities (farmer's market, local BID activities, parks, etc.)
47	The sense of belonging that our residents share.
48	It has its own personality and identity. Feels like a community.

What do you like LEAST about Sun Prairie?

1	Traffic becoming a real concern - Hwy 151 Noise felt in residential areas (Smith's crossing)
2	Lack of multi-modal accommodations
3	The mayor is making too many decisions. Doesn't have sense for good growth
4	Not a lot of affordable homes for starting families. Taxes are too high. Not enough Blk. Businesses
5	Lack of public transportation connection to Madison. I'd love to take public transport from Sun Prairie to UW Hospital for work every day.
6	Need more ethnic restaurants. Thai, Indian, Mediterranean, Italian (not pizza)
7	High taxes. Too many apartment buildings. Services can't keep up with growth.
8	Not enough concern about the history of the area. We are the Groundhog capital of the country & have a corn fest celebration and have to ship in corn because we don't have any land to grow corn.
9	Highway noise
10	Workforce housing doesn't pay for schools & other taxes.
11	Growing too fast. Multi-Unit housing growth is too fast/much.
12	Property taxes too high
13	Sprawl and large developments that increase traffic w/o really accommodating bike/ped usage.
14	Lack of interesting entertainment/nightlife.
15	questionable traffic if you build by me; lots of walkers in area
16	Speed of growth
17	Taxes. Multi-unit housing. Municipal services don't match taxes paid.
18	Too much sudden building of homes & especially apartments. Loss of adequate planning for traffic patterns & schools
19	West side/Reiner Rd. traffic - not looking forward to Menards/East-Towne feeling traffic.
20	Lack of diversity in foods/restaurants
21	Shift to overloading multi-family
22	Rent is skyrocketing
23	No more luxury multi-units.
24	Auto races. Limits decent housing in that area.
25	Lack of public transit connection to Madison (East Towne)
26	Too much development, i.e. housing, not much green space anymore
27	Taxes. Lacks comprehensive plan for growth (which is why we are here). Still has not become a community for all. Downtown needs revitalization. Lack of public transportation
28	Not enough affordable housing.
29	Housing, consider middle income folks.
30	Need affordable housing for 55+ not just luxury apts. Or low income
31	There is not enough living spaces for low income families. No affordable housing for income. Job opportunities for African American.
32	Business opportunities for African Americans. African American culture display museum is not appreciated.
33	It is expensive to live in the city.
34	SP is growing way too fast. Need to slow it down.
35	Traffic becoming an issue due to multi-unit housing.
36	We don't have nothing to do.
37	Vandenburg Heights poor neighborhood, very unsafe.
38	More conservative alderpersons, fewer apartments
39	All the house really close together
40	Too much apartment housing resulting in increased transiency w/ negative impact on schools
41	Cookie-cutter "Pleasantville" housing
42	Lack of affordable housing and no public transportation
43	Double lane roundabouts are a bad idea
44	More affordable housing needed for retired people. Do we really need all these new luxury apartment/condo buildings?
45	Lack of public transportation options. A sidewalk "policy" that disregards public opinion. Worry of a sagging downtown/East side.
46	Too many apartments going up. Future apartments will not be kept up. The owners of the property don't live here and only what their [tenants] money. (Another person agreed)

What do you like LEAST about Sun Prairie? (CONTINUED)

46	Too many apartments going up. Future apartments will not be kept up. The owners of the property don't live here and only what their [tenants] money. (Another person agreed)
47	Need more diversity in dining options. More social service info/support "City" meeting during more flex hours. More policing neighborhoods for safety.
48	Why do we wait till the snow stops to plow?
49	Traffic concerns - especially in the booming Prairie Lakes/Smith's Crossing area.
50	Traffic congestion
51	No public transportation
52	Lack of coherent sidewalk policy
53	The widening achievement gap
54	Too high of real estate taxes!!
55	Main street from 151 to old downtown is ugly, ugly, ugly
56	Cost of renting apartments
57	lack of commitment to <u>complete</u> networked pedestrian path - sidewalks/bike paths (off roadway)
58	Incomplete bike paths (Another person agreed)
59	Traffic concerns around Prairie Lakes
60	Lack of good paying manufacturing/high tech jobs
61	Too many apartment buildings changing the small feel of the city
62	We need less schools. Can't maintain our current schools without raising taxes.
63	Too much inviting of more people and building more apartments (too many)

What makes Sun Prairie UNIQUE?

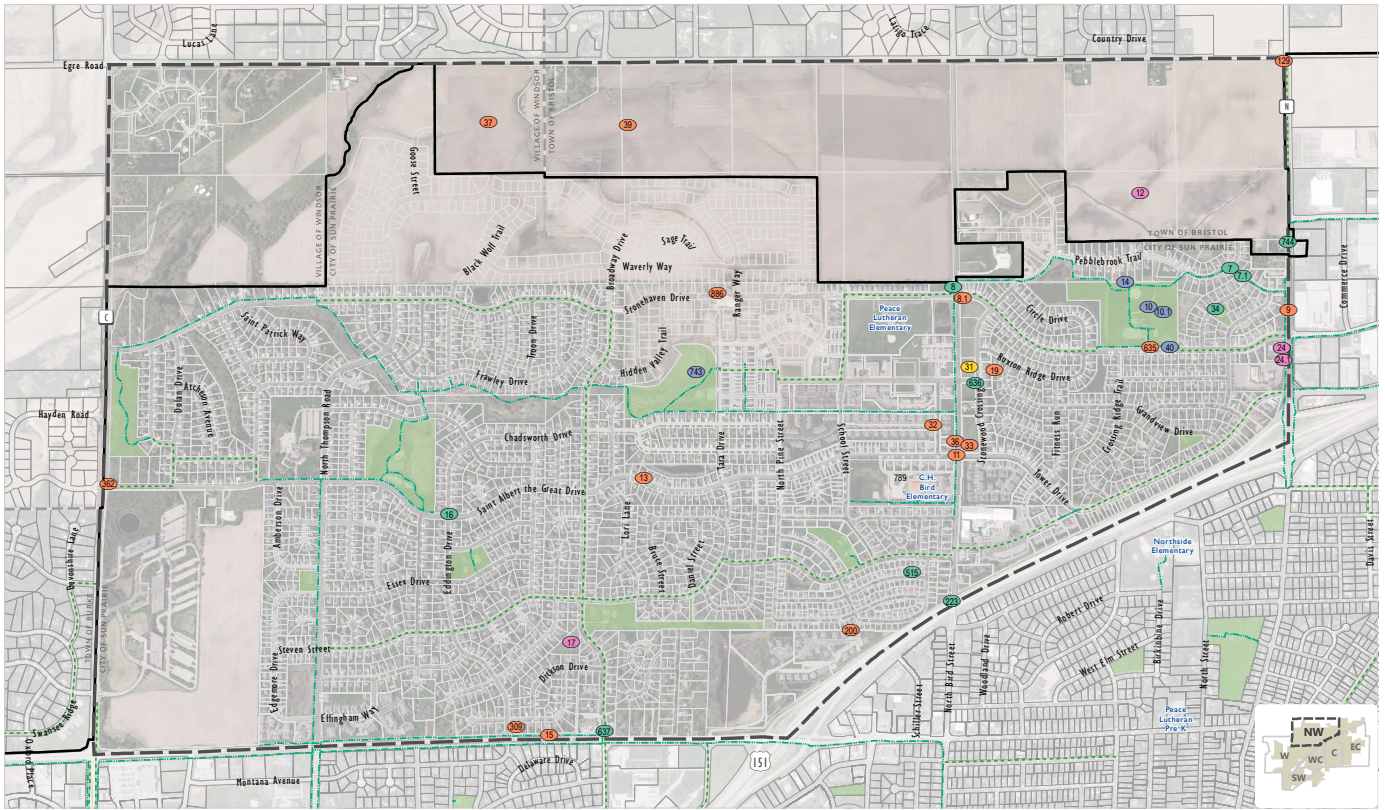
1	Sustained growth without sacrificing small city atmosphere.
2	Quick to get from city/downtown to country - best of both worlds.
3	Growth rate.
4	Cow festival. Need something else like a Wayfair, IKEA. Larger food market like Eau Claire has.
5	How Costco affects the local food pantry! (Sunshine)
6	The businesses & places to live (multi-apartment units) are growing.
7	Groundhog Day Festivities. Make event bigger, bring back Jimmy - have him help up so everyone can see, work w/ local animal welfare group for safe care of groundhog.
8	Historic Elements (museum, parks). Prairie Phoenix Academy given the size of the community.
9	Right now. Nothing.
10	When we all can work things out together.
11	The people.
12	Is that it has the potential to grow if are cultures, races, and ethnicity are working together.
13	Angell Park. Music program (school and community).
14	Sun Prairie Health Club. Move theatre.
15	It's diversity & commitment to community & growth.
16	People complain about the taxes, everything the city does - but that is what makes the city a great place to live. Parks, schools, library, community programs, the pool, etc. Continue to think long term & not just for those of us that are financially well off. Those community school programs, Boys & Girls Clubs, Sunshine Place are great resources. Public transit.
17	Small town feel w/ big city amenities.
18	Next to big city but small town flavor.
19	I love the small town feel of Main Street, but we can drive a short distance for all the "big city" stuff on the west side.
20	Quaint, small town near larger city.
21	Best of both worlds.
22	Growth and intense diversity.
23	The opportunities for growth while still maintaining a connection to Madison.
24	Great YMCA, Library, Parks, Schools (with Art, Music, and Sports)
25	Love the Media Center, the Star, and the Library.
26	We are suburban and not urban

What are your BIG IDEAS and ASPIRATIONS for our community? What would you CHANGE or IMPROVE?

1	Stop using TIF for everything. If we are so desirable, make them pay fair share.
2	Support the Boys and Girls Club or other nonprofit to get our young people engaged in the community to feel like they are a part of it and to help them keep it safe, clean, cared for.
3	Community Center (Colonial Club) is GREAT for seniors, but we need something more accessible for family entertainment that is low cost & high involvement .
4	Slow population growth: development on Grand Ave/ C.
5	Change: family style restaurant. Something unique like arboretum of unusual plants. Farmers market square area with parking like Eau Claire built in the center of the city.
6	Keep green space in all the planning - need trees and grass everywhere to feel connection to nature even in the city. A nature center would be a great addition too.
7	When building, use more "base model" approach to keep costs down. Schools, services, etc.
8	Talk to other communities the same size to see what they are doing right. I.e. Watertown just recently listed as best place to retire in WI.
9	A community center.
10	Youth sports complex for multiple sports and better tournament hosting. Better mark/sign/promote city bike loop.
11	As a Town of Sun Prairie resident and farmer, I support plans that limit/restrict annexing the Town's property.
12	Continue to promote new organization's events: bike races, etc. Continue to update downtown area.
13	The City of Sun Prairie is good on the quantity of "City" but is light on the quantity of prairie. Can we increase to w/ realistic, definable, measureable goals?
14	Growth so that all residents have access to affordable housing and efficient public transportation.
15	Improve transportation system - whether adding busses or trolleys and tie all together across entire city and to East Towne and east side of city
16	If there is a way to draw in more restaurants (non-chain) that would be great. Continue to grow bike path & signage & ways to promote parks, bike paths, etc.
17	Transportation that connects with Madison more easily.
18	Better public transportation to downtown Madison.
19	Government resources for elderly and families. Example: Social Security Offices.
20	A teen space.
21	Working things out together.
22	Revitalize downtown. Better stores. Need unique ice cream shop.
23	Transportation for youth, i.e. bus
24	Will Grand Ave be able to handle all the traffic with all the new building being built there?
25	More community involvement from different races, income class, business, and politicians to make sure everyone is being represented.
26	To become a diverse city with small business growth as well as large.
27	Would like to see a Longhorn Steakhouse built. Ate there on Mother's Day. Best steak I've had in a long time.
28	Diversity business opportunities. All citizens can become homeowner regardless of Race, Color, Ethnicity. Better jobs for College graduates or High School graduates.
29	Boys and Girls Club for underprivileged children.
30	Fun zone.
31	Lazer Tag
32	A 30-40 acre green space w/ athletic fields for tournaments/events.
33	Need bus services, transportations to City of Madison
34	Fix fountain on Cannery Square
35	Improve the skate park.
36	More affordable housing for 55+ & middle income smaller units!
37	More affordable housing for middle income. More speedbumps.
38	Finding public transportation solutions. Making commenting to Madison & vice versa easier. Ensuring focus on the west side isn't a detriment to the older areas of the city.

What are your BIG IDEAS and ASPIRATIONS for our community? What would you CHANGE or IMPROVE?

39	Great community radio/TV. Unique blend of growth & small community. Develop the east side to balance the city.
40	To have public transportation, more tourist attractions, more strict traffic rules. (Isabella, S-GS Creekside)
41	Sustainability: environmental, financial, developmental. Keep long term planning at the forefront.
42	I think the plane for growing and development is out-pacing the infrastructure and transportation.
43	Completed sidewalk network - both sides every street. Could be sidewalk/bike path combined paths.
44	1. Lack of a "Central" Activity Center for all school age children similar to YMCA, Boys & Girls , etc. clubs <u>FREE</u> participation open from 8am-9pm Sun-Thurs & Holidays, Fri & Sat close at 10pm. 2. Repair/renovate "old" areas vs building new apartments and/or business constructions. 3. More Free adult activities to incl. dancing "halls" & more like Colonial Club activities & more flexible hours. 4. Allow "Guizmo" to remain within Main St. area. 5. Brighter lights at night. 6. More "handicap" support.
45	Need better looking Main St. Need restaurants & shopping on East Side.
46	Needs more East side development.
47	Small parks required in every development.
48	Venue for Teenagers.
49	High tech industrial park with good paying jobs.
50	Transportation to Downtown Madison. More unique retail.
51	Make our schools better - better wages for teachers - continue support of arts. Keep class sizes at or below target.
52	Continue to develop with unique retail and commercial offerings.
53	Public transportation to Madison. Bike lanes in central district.
54	Public transportation: shuttles/busses.
55	Please continue to make Sun Prairie more bicycle <u>Friendly SAFE!</u>



NORTHWEST

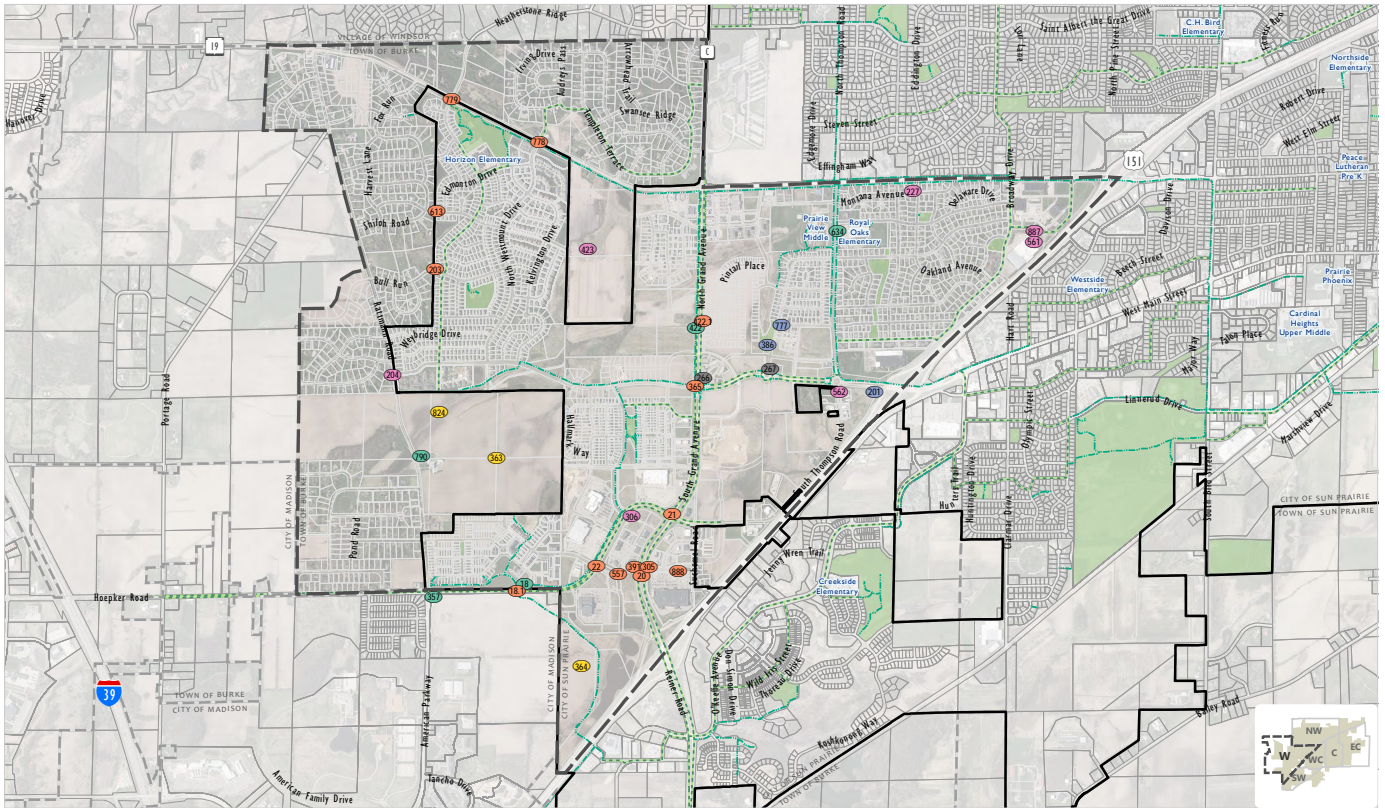


- Neighborhood Planning Area
- Sun Prairie
- Other Municipality
- Park
- On-street Bike Trail
- Off-street Bike Trail
- Forum Comment
- A: Bike/Pedestrian Improvements
- B: Traffic Safety Concerns
- C: Park Improvements
- D: (Re) Development Sites
- E: Preservation Sites
- F: Unknown or Unspecified Categories

Public Hearing Comments
 May 14th, 17th, and 19th 2018
 City of Sun Prairie Comprehensive Plan

Dot #	Category	Comment
7	A	Our trail is not connected to the rest & winter maintenance is a must since maintenance of roads are poor at best in winter
7.1	A	Lack of sidewalk connecting neighborhood to CTH N. Also a disconnect for trail that runs along N and through park.
8	A	Trail Crossing is not well signed - should be moved to intersection. Also speeding in general on Bird is bad. Roundabout would be good entry treatment to slow vehicles
8.1	B	Trail Crossing is not well signed - should be moved to intersection. Also speeding in general on Bird is bad. Roundabout would be good entry treatment to slow vehicles
9	B	Speeding in general on CTH N. Would be good to reconstruct as a road diet.
10	C	You installed soccer fields, but no additional parking and removed basketball courts used by many in area and have not replaced
10.1	C	Do not eliminate Baseball Field - Gets heavy usage in Spring/Summer. Would rather see space for multiple uses vs. heavy soccer - I.e. Basketball, splash pad! Also Baseball field is not a dog park, but gets used that way - please enforce/sign better
11	B	Roundabout!
12	D	What is plan & timing for this development? Hopefully single family residential
13	B	Blind corner for some driveways on this curve. Traffic speeds up quickly after stop sign @ Broadway and doesn't slow until nearing Bird School
14	C	Drain out ditch is overdue for dig/clean for better drainage of pond, which gets high in high rains. Ditch in park area mostly. Plugged up.
15	B	Continue right lane from Broadway to Eddington. Traffic is forced to merge to make right to Eddington
16	A	Continue trail to Eddington

Dot #	Category	Comment
17	D	Upgrade basin for better function and treatment, make storage
19	B	If they build across from Stonewood worried still about traffic & people getting hit by a vehicle
24	D	Sunny Day Daycare - could use a restaurant on the Business Park side of town
24.1	D	Redevelopment
31	E	Keep undeveloped or duplexes built
32	B	Poor clearing of snow
33	B	Strong concern with traffic at this intersection with school, buses, walkers, and drop-off/pick-up hours! Especially with high increase of apartment building.
34	A	Need sidewalks along rest of Pebblebrook Trail thru Boulder Way and Terrace Chase for walking/biking!
36	B	busy street at corner. Care needed for students
37	B	My concern relates to traffic increases caused by Token Springs School. I would like to see Thompson and Broadway connected to Egge Rd. We live on the corner of Frawley and Thompson, and have neighbors with similar concerns.
39	B	My concern relates to traffic increases caused by Token Springs School. I would like to see Thompson and Broadway connected to Egge Rd. We live on the corner of Frawley and Thompson, and have neighbors with similar concerns.
40	C	Basketball and tennis court would be great!! :)
129	B	Expand N to four lanes to Highway V
200	B	Need connection to Vandenburg from Lois Drive. "Pagoda Park" - Emergency access & alternative access for construction
223	A	See # 42 above - prevents bikers from North of 151 from utilizing Main St. businesses
309	B	Right turn into Eddington is hard, need to extend lane
362	B	Too much growth causing traffic issues - cars not following speed limits, not knowing how to use roundabout, long lines at stop lights, difficulty getting around streets with no lights.
515	A	Better Sidewalks. Speedbumps
635	B	Speed controls on Stonehaven Dr
636	A	Crosswalk @ Liberty and Bird
637	A	Bike/ped improvements on Broadway into the neighborhood - bike path connection
743	C	Shelter & water for park. Year-round snow removal on all off-street paths.
744	A	Continue off-street multi-use path. Add on-street bike lane/bike route through Pebblebrook trail & sidewalks to all neighborhoods!
789		Sticker but no comment
886	B	Approve of Stone Haven connection



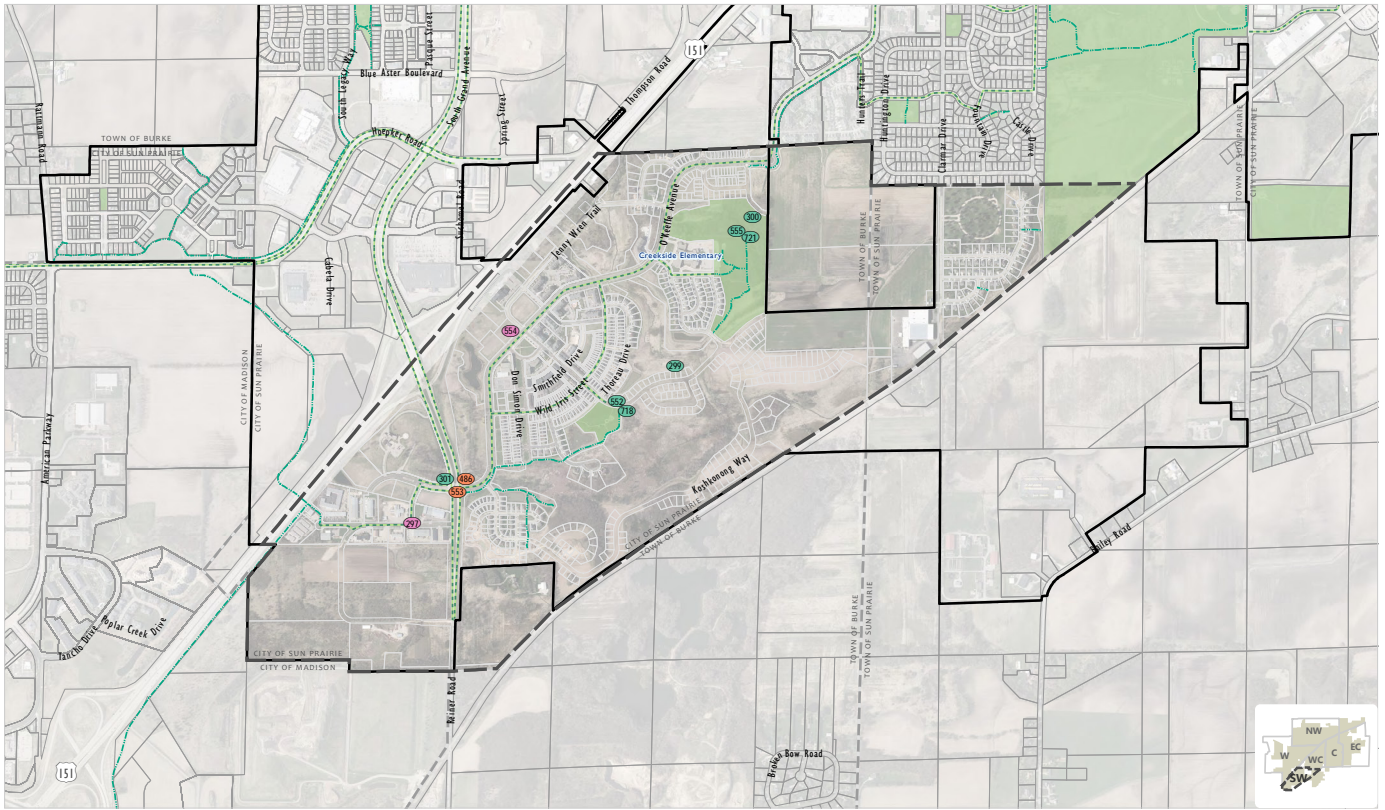
WEST
MSA

- Neighborhood Planning Area
- Sun Prairie
- Other Municipality
- Park
- On-street Bike Trail
- Off-street Bike Trail
- Forum Comment
- A: Bike/Pedestrian Improvements
- B: Traffic Safety Concerns
- C: Park Improvements
- D: (Re) Development Sites
- E: Preservation Sites
- F: Unknown or Unspecified Categories

Public Hearing Comments
May 14th, 17th, and 19th 2018
City of Sun Prairie Comprehensive Plan

Dot #	Category	Comment
18	A	Trail does not connect here. It is a key missing link
18.1	B	Connect trail on Hoeper to trail that goes to Madison. Bikes need to leave path, cross without protection to other path
20	B	Need lights to be time with a few additional seconds to avoid cause rushing to sneak through. And/or less-confusing lights!
21	B	Need dedicated right turn lane from South-Bound South Grande Ave to Hoeper Rd.
22	B	Need dedicated right turn lane from Southeast-bound Hoeper Rd to Triumph Dr. (Costco)
201	C	Find a way to use detention ponds for either passive recreation (Picnic Tables & walking paths) or active recreation (Paddle Boat & Kayak Rentals)
203	B	Remove all roadblocks between town of Burke roads & city streets to improve emergency vehicle access! Should have been done years ago!!
204	D	Purchase site for possible west branch library
227	D	Need more affordable, low income, mix communities so schools can have more diversity
266	F	Transportation
267	F	Transportation - Local for residents to get around to stores
305	B	This intersection is too large and the traffic lights need to have longer intervals. People going through on yellow aren't through the intersection until the other light has been green for 2-3 seconds
306	D	Put a chipotle here
357	A	Off-street bike lanes to connect S.P. and Madison
363	E	No land really left to preserve on West side. Need more park area, open space conservancy
364	E	No land really left to preserve on West side. Need more park area, open space

Dot #	Category	Comment
365	B	Too much growth causing traffic issues - cars not following speed limits, not knowing how to use roundabout, long lines at stop lights
386	C	Develop park in city owned land
391	B	Prairie Lakes & grand has major traffic issues, especially with the turn lanes. There seems to be a lot of confusion with the two right turn lanes off Prairie Lakes onto southbound Grand.
422	A	hope to see improvements for bike & walking safety near new school site. And good traffic controls during peak traffic hours
422.1	B	hope to see improvements for bike & walking safety near new school site. And good traffic controls during peak traffic hours
423	D	Concern about traffic flow Rd. New/potential has at this location. Legacy way needs to go thru to this site, Don't funnel this traffic to Ironwood
557	B	Nightmare trying to use this road in mornings, afternoon, or evening.
561	D	Mixed-use: commercial/residential
562	D	Tired looking buildings - either fix existing street, put smaller buildings, or just make the area green space to compliment the soon to be built storm water pond
613	B	Eventually, connect 3 streets between Sun Prairie and Burke
634	A	Improvement of existing bike/pedestrian path
777	C	West Prairie Village desperately needs a park. The continued growth of the neighborhood w/ Phase II will further exacerbate the need. Acquisition of land should be done
778	B	Intersections are very unsafe without protected left turn lanes. Vehicles pass on the shoulder and there is constantly a potential for a bad accidents
779	B	Intersections are very unsafe without protected left turn lanes. Vehicles pass on the shoulder and there is constantly a potential for a bad accidents
790	A	Add a bike/walking path to quickly connect to Am Fam & other places south of neighborhood.
824	E	Keep agricultural/natural as long as possible. Some type of conservancy in this area would be appropriate.
887	D	Would like the city to attract tech/prof development to Communications Dr. site
888	B	traffic signal to aid with woodman's access





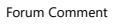








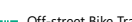


SOUTHWEST

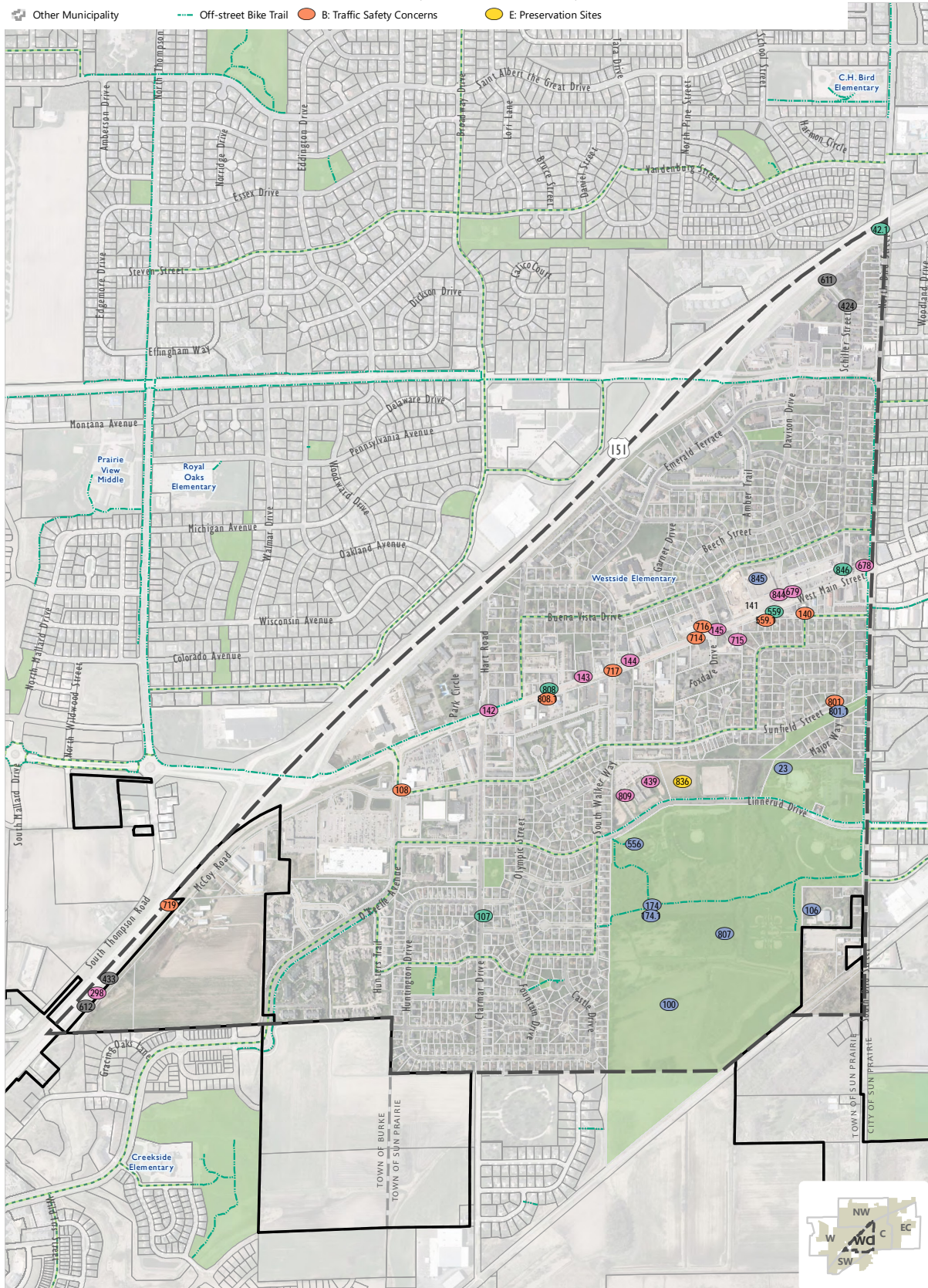


- Neighborhood Planning Area
- Park
- On-street Bike Trail
- Off-street Bike Trail
- Sun Prairie
- Other Municipality
- Forum Comment
- A: Bike/Pedestrian Improvements
- B: Traffic Safety Concerns
- C: Park Improvements
- D: (Re) Development Sites
- E: Preservation Sites
- F: Unknown or Unspecified Categories

Public Hearing Comments
May 14th, 17th, and 19th 2018
City of Sun Prairie Comprehensive Plan

Dot #	Category	Comment
297	D	Need to redevelop this area and relocate these businesses
299	A	Trail connection needed
300	A	Trail connection needed
301	A	Bike crossing @ O'Keeffe & Reiner is dicey
486	B	I think a traffic circle is need badly at this intersection - eliminates the need for a traffic signal (that's not needed all day) as slows traffic dramatically. The bike path crossing, traffic with kids, etc. Yikes!
552	A	Lets complete this bike path.
553	B	Consider traffic light. Very unsafe during rush hour
554	D	Restaurant, convenience store would be appropriate
555	A	Continue off-street bike trail to link up with trail on O'Keeffe Ave.
718	A	There are bike paths to nowhere (or that end abruptly) all over Smith's crossing. There are lots of walkers and bikers who would appreciate connecting them.
721	A	There are bike paths to nowhere (or that end abruptly) all over Smith's crossing. There are lots of walkers and bikers who would appreciate connecting them.

-  Neighborhood Planning Area
-  Park
-  Forum Comment
-  C: Park Improvements
-  F: Unknown or Unspecified Categories
-  Sun Prairie
-  On-street Bike Trail
-  A: Bike/Pedestrian Improvements
-  D: (Re) Development Sites
-  E: Preservation Sites
-  Other Municipality
-  Off-street Bike Trail
-  B: Traffic Safety Concerns
-  E: Preservation Sites
















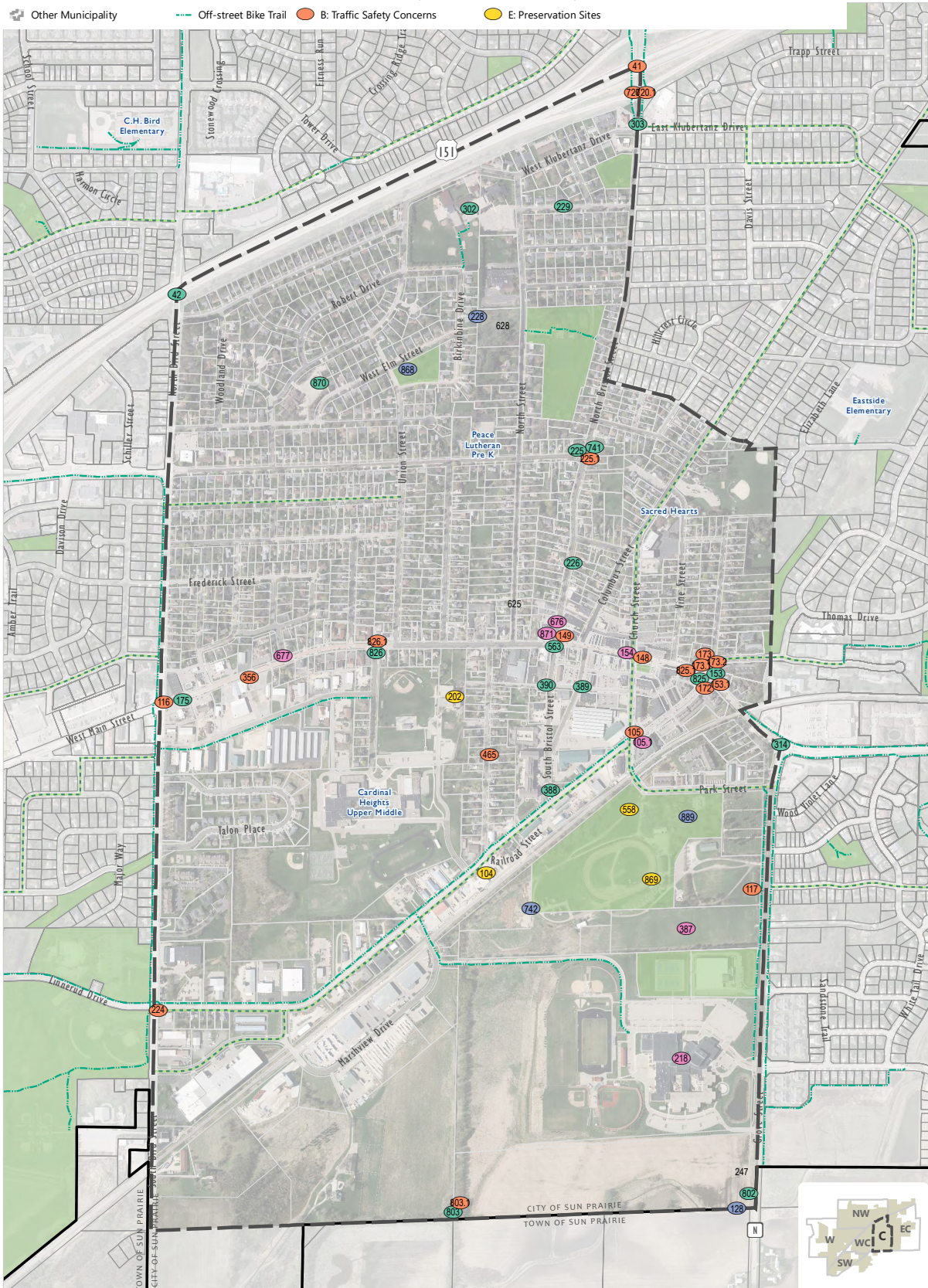
WEST CENTRAL

Public Hearing Comments
May 14th, 17th, and 19th 2018

Dot #	Category	Comment
23	C	Remodel/expand F.A.C. to include a year-round indoor/competitive/8-lane pool w/ spectator seating.
42.1	A	Would be great to have better Ped/Bike accommodations on Bird St & over Bridge
100	C	More way to maintain quality of this wonderful park, back to littering and anti-wildlife effect capable
106	C	improve the skate park, needs more ramps and obstacles
107	A	lack of sidewalk on east side of Clarmar
108	B	Needs lights?
140	B	Traffic on Lothe St goes too fast - close Lothe at Main St.
141		Sticker but no comment
142	D	Our main street area from 151 to Old Downtown area looks un-unified and unattractive
143	D	Our main street area from 151 to Old Downtown area looks un-unified and unattractive
144	D	Our main street area from 151 to Old Downtown area looks un-unified and unattractive
145	D	Our main street area from 151 to Old Downtown area looks un-unified and unattractive
174	C	Would like to see lots of things remain here, park & natural areas. Something like a splash pad would be a nice addition. (On other sites in City)
174.1	C	Potential for improved/additional sports fields. This springs weather has shown where we are lacking in both quantity and drainage
298	D	Consider a sound/noise barrier along the highway. Some houses are very close
424	F	More garbage/recycling systems in general to prevent littering and 'slumming' of nice areas.
433	F	We live at 1138 Gracing Oaks Ln, noise + visuals of traffic from HWY 161 is becoming a real issue. 70 mph speeds in combination w/ increased traffic flow is a real concern for us & our neighbors on Gracing Oaks & O'Keeffe in Smith's Crossing. Please consi
439	D	The Library and Media Center are gems of our community that are outgrowing their existing spaces. I w would love to see more space without diluting quality - perhaps 2 libraries?
556	C	Splash pad
559	A	Odd street configuration along w/ increased traffic for the retail and residential in the area. Need to have a safer pedestrian crossing in this area.
559.1	B	Odd street configuration along w/ increased traffic for the retail and residential in the area. Need to have a safer pedestrian crossing in this area.
611	F	Needs love alongside 151
612	F	We live at 1138 Gracing Oaks Ln, noise + visuals of traffic from HWY 161 is becoming a real issue. 70 mph speeds in combination w/ increased traffic flow is a real concern for us & our neighbors on Gracing Oaks & O'Keeffe in Smith's Crossing. Please consi
678	D	Favor redevelopment of 4 corners (Bird & Main) but not with intense residential (apartments) either completely retail/commercial or mixed use - should consider city financial participation
679	D	Favor redevelopment of Main St. shopping center - currently unattractive, outdated - favor combined mixed use concept

Dot #	Category	Comment
714	B	in winter is there a way to remove snow adjacent to curbs downtown area - (maybe in middle of night) so parking on Main street in Downtown area next to curb is easier
715	D	Should not be more apartments! Too much concentration of people and traffic.
716	B	Traffic speed is too great on Main St. Definitely does not encourage walking.
717	B	Traffic speed is too great on Main St. Cars go through on red frequently presenting danger to children & walkers
719	B	Another access point to the other side of 151 would be great at this area. Only having 2 ways in/out of Smith's Crossing is limiting.
801	B	Traffic speeding and stop sign violations still a concern
801.1	C	Pheasant Run Park needs to have more equipment.
807	C	Dedicated, permanent single-track off-road trails and snow removal on multi-use path year-round.
808	A	Near the Culvers is a horrible pedestrian crossing - it is near impossible to see pedestrians from car & scary to cross on foot. A flashing light to alert of pedestrians & to slow traffic would be helpful for all - Anywhere in that area between O'Keeffe &
808.1	B	Near the Culvers is a horrible pedestrian crossing - it is near impossible to see pedestrians from car & scary to cross on foot. A flashing light to alert of pedestrians & to slow traffic would be helpful for all - Anywhere in that area between O'Keeffe &
809	D	Expand the Library! It is a jewel in this city
836	E	Preserve the natural area surrounding the library/Sheehan Park
844	D	The area is all cement and buildings need renovating and need to look more inviting
845	C	Needs green space - park. Paths within walking distance are not east to get to . People, dogs, and child friendly
846	A	Safe, well lit, green walking paths to access downtown

-  Neighborhood Planning Area
-  Park
-  Forum Comment
-  C: Park Improvements
-  F: Unknown or Unspecified Categories
-  Sun Prairie
-  On-street Bike Trail
-  A: Bike/Pedestrian Improvements
-  D: (Re) Development Sites
-  Other Municipality
-  Off-street Bike Trail
-  B: Traffic Safety Concerns
-  E: Preservation Sites



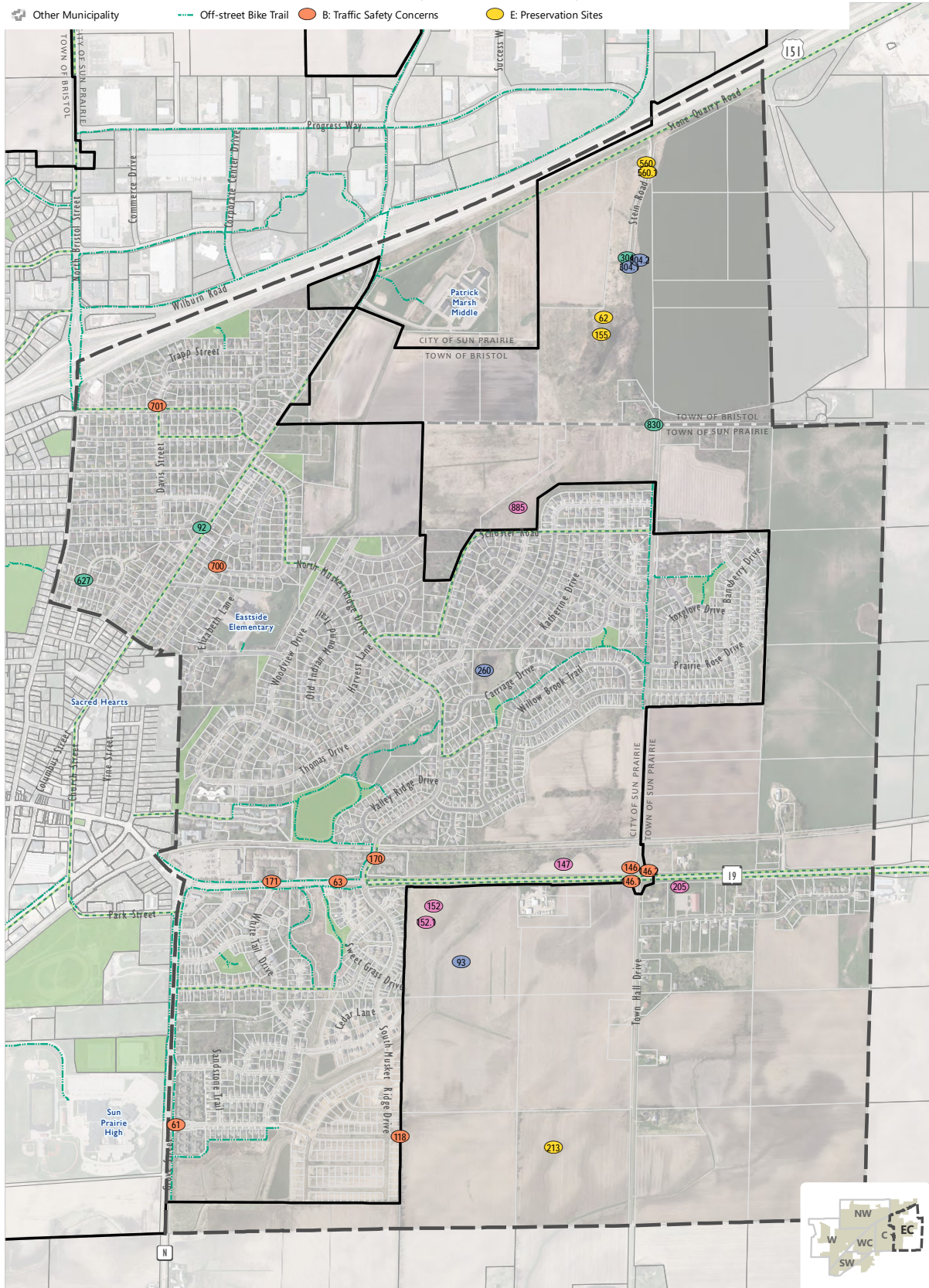
CENTRAL

Public Hearing Comments
May 14th, 17th, and 19th 2018

Dot #	Category	Comment
41	B	Stop & go lights at intersection
42	A	Raised sidewalk o unmarked bike lanes - not safe to bike w/children on trailers
104	E	Preserve the railroad corridor - that's a unique feature of the city
105	B	Roundabout? Mini-roundabout?
105.1	D	Can we install a multi-modal/local alternative transportation that dovetails with the freight rail to more population between Verona/MSN/ Sun Pr.?
116	B	Concerned that roundabout & park will change the city as dramatically as the large apt. bldgs. they are plan & have built in the area.
117	B	We need to create another public street connection between Linnerud Dr and Grove St to relieve the traffic volume at peak times in the down town.
128	C	Secure acreage for Sun Prairie Botanical Gardens
148	B	There is a lot of Traffic on Main St. and where do locals and tourists park to enjoy downtown shopping?
149	B	Semi trucks have problems turning onto Bristol (North). This traffic needs to be addressed.
153	A	Cars too fast. Not yielding for walkers/biking
153.1	B	Traffic intersection need to be addressed. Especially for turning south from Main St. from the East
154	D	Keep Main St. to small unique businesses. No big apartments
172	B	Left turn only into neighborhood to repaint yearly. Lots of people go around in Left Lande downtown. Also hard/impossible to turn left in morning from 7:45-830. Stoplight/stop sign?
173	B	Poor sight distance, but limited alternative to access Carriage Hills
173.1	B	Terrible intersection - as near bottom of hill, busy downtown and homes, businesses, streets that are often turned onto off of main street
173.2	B	Left hand turns are difficult here from 7am-7pm
175	A	Would like to feel safe biking w/ family across town
202	E	Purchase Prairie Phoenix from SP Area School District * Move Historical Museum there. Retain current museum for use as Georgia O'Keeffe Gallery. SPASD should rent space or build new space for P.P.A.
218	D	Do not build or add on to high school taxpayers have paid enough for the school system
224	B	Lane configuration is funny - would be a good single lane roundabout
225	A	Challenging intersection - especially for non-locals
225.1	B	Challenging intersection - especially for non-locals
226	A	Bike routes to downtown needed... and in downtown
228	C	Throughout Sun Prairie there are no Public facilities to host indoor programming such as afterschool programs, winter sports, etc.
229	A	North enough bike paths. Sidewalks flood when rain.
247		Sticker but no comment
302	A	Connect these bike trails; prefer off-street trails. Could also extend to Wetmore Park. Off-street trails are much safer.
303	A	Connect these bike trails; prefer off-street trails. Could also extend to Wetmore Park. Off-street trails are much safer.
314	A	Suggestions: No right on red even with talking traffic lights cars will run you over when walk sign is on
356	B	Too much high density housing in one block area. Pedestrian, Bicycle, and Car traffic will increase dramatically and be very unsafe. Main street will NOT be able to handle it, making people avoid the area or use alternate routes. Also it will be unsafe fo

Dot #	Category	Comment
387	D	Potential for planning multiple uses both during events and off time use (vs. grass area). Put development on Grove St.
388	A	Very wide crosswalk (not marked well) Potential for re-working intersection
389	A	Sidewalk ramps needed in all directions
390	A	Sidewalk ramps needed in all directions
465	B	High school kids speeding down street. Consider traffic calming measures
558	E	Enjoy having a large activity venue so close to downtown along w/ the extended open/park space
563	A	better pedestrian access for the entire Bristol Street Intersection
625		Sticker but no comment
628		Sticker but no comment
676	D	Favor revised redevelopment proposed by David Bahe
677	D	Favor proposed redevelopment of Hanley property as proposed as long as "mixed use" is truly that with retail/commercial on first floor
720	B	Could use light on N/151 interchange
720.1	B	When 151 was resurfaced, I was hoping for exit ramp stop lights. Stop signs did not go to lights. These are difficult left turns onto Bristol
741	A	Lighted crosswalk, better signage for motorists to yield. Entrance stopping @ right turn.
742	C	Create single-track trails for cycling & walking with connection to Sheehan Park (off road trail)
802	A	Bike /running path :)
803	A	Bike path as well from Bailey /Bird street to 802
803.1	B	Bad intersection getting busier - cars pull out fast
825	A	Traffic control/Pedestrian Safety @ Dewey/Main - Bring back the crosswalk! Please consider pedestrian safety signals w/ flashing lights (Monroe St in Madison and Atwood). Traffic comes through this corridor so fast - having a signal w/ flashing lights to
825.1	B	Traffic control/Pedestrian Safety @ Dewey/Main - Bring back the crosswalk! Please consider pedestrian safety signals w/ flashing lights (Monroe St in Madison and Atwood). Traffic comes through this corridor so fast - having a signal w/ flashing lights to
826	A	Better pedestrian crossing visibility
826.1	B	Better pedestrian crossing visibility
868	C	Keep tall trees - replace chips w/ rubber. Update or remove sandbox
869	E	maintain site
870	A	No sidewalk through church trees or that side of street
871	D	No new apartments here
889	C	Restroom/hand wash facilities near dream park. Accessible year-round

- Neighborhood Planning Area
- Park
- Forum Comment
- C: Park Improvements
- F: Unknown or Unspecified Categories
- Sun Prairie
- On-street Bike Trail
- A: Bike/Pedestrian Improvements
- D: (Re) Development Sites
- Other Municipality
- Off-street Bike Trail
- B: Traffic Safety Concerns
- E: Preservation Sites



EAST CENTRAL

Public Hearing Comments
May 14th, 17th, and 19th 2018

Dot #	Category	Comment
61	B	High school traffic & left hand turns for parking g in the neighborhood are making this a dangerous intersection in the morning
62	E	Great natural area to preserve and/or expand
63	B	Cars traveling west on 19 into Sun Prairie and also cars traveling out of Sun Prairie going east very often increase speed to 45-55 mph when still in the 25-35 mph zone.
92	A	Bike lanes on Columbus?
93	C	Is there space for a multipurpose youth sports facility here. Would be close to downtown!
118	B	We need to create a relatively straight arterial east-west street on the far east side of the city to provide an alternative to STH 19.
122	A	Would love a bike path along N all way to McCarthy Park! It would connect the city to rural area/park.
146	B	Traffic concerns; at certain times of the day it is very difficult to get across Town Hall crossing Hwy 19
146.1	B	Something needs to help with busy traffic certain times of day
146.2	B	Traffic is getting really bad at this intersection. Needs a stop light (4way)
147	D	This could be a good place for light industrial or commercial businesses, in front (south) of railroad tracks.
152	D	19 east of Pick n Save - Family Restaurants - Fit the style of downtown traditional
152.1	D	Would like to keep the Eastside of town free of Big Box - retail -
155	E	Enjoy this a place to enjoy nature. Appreciate the conservancy working to down what needs to be done in S.P.
170	B	Gated RR crossing. Currently none like downtown. Provide stop sign? Cut back weeds & hill to improve visibility?
171	B	Very unsafe part of 19 - there should be a crosswalk from Whitetail Drive across 19 to other side walk in front of East Bay Condos
205	D	Purchase site for possible west branch library
213	E	I would like to see all of this existing farmland converted into preservation site or prairie reserve. The City of Sun Prairie is good on city but light on prairie :)
260	C	This pond has been labeled as a "runoff" or dry pond but It has always had standing water since 2009, and longer. Concern #1 is mosquitoes. Without using pesticides, a pump to keep the water moving has to happen. #2 is to add to the area to make it more
304	A	Bike paths @ Patrick Marsh Pond. Great if extended around whole pond; and/or connect to bike trails
304.1	C	Paddle sports (Kayak/Canoe) Access? We have limited water features to take advantage of!
304.2	C	Bike paths @ Patrick Marsh Pond. Great if extended around whole pond; and/or connect to bike trails
560	E	Great recreation place - wish there was a bit more to the area
560.1	E	The trails at Patrick marsh are wonderful. This is a wonderful natural area in the city.
627	A	Speed bumps on E. Elm Street
700	B	Clara St needs a look at traffic calming devices
701	B	Better enforcement of stop signs at Klubertanz & Davis
830	A	Multi-use path to create loop around city or provide safe routes to school & parks
885	D	Like the fact that the area is purely residential. No easy access to neighborhood. Quiet & family friendly. Do not want additional growth. Keep area single family homes - no apartments

Unknown

Dot #	Category	Comment
999	A	Please keep pedestrian & bike safety in mind - more bike lanes and better pedestrian crossings
999.1	B	Intersections are very unsafe without protected left turn lanes. Vehicles pass on the shoulder and there is constantly a potential for a bad accidents. This is for all intersections west of Grand along Hwy 19
999.2	C	Outdoor band shell/concert venue with seating
999.3	C	Splash pad
999.4	D	Historic downtown - please keep developments in scale with existing historic downtown. I like the idea of a new apartment on Bristol near main if it isn't larger in scale than the existing buildings and is similar in style
999.5	D	With large development, green space!
999.6	D	I'll be here for another 60 years. I want all of this development to have an eye to the <u>long</u> term. Sustainability - not having poorly built eye-sores.
999.7	D	Please consider more mixed-use development

PUBLIC INFORMATIONAL MEETING 2019

Discussion - Public Meeting Feedback

- Meeting attendance: 120+ total people
- 42 comments forms submitted (so far)
- Comment forms available on City website until 5/20



• Themes:

- Opposition to additional multi-unit complexes. Some support multi-unit complexes but not “low income housing” – fear of who this brings into the City. Concern that renters in large buildings aren’t committed to future of the community.
- Support for balanced neighborhoods, integrating multi-unit complexes into neighborhoods and making them feel like part of the community. This will also improve equity at schools. Also, interest in new ranch homes.
- Support for affordable housing for all housing types.
- Support for attracting higher paying manufacturing and business employers.
- Majority (67%) supportive of the City’s goals to make housing a priority and ensure that all residents have safe and affordable housing options in Sun Prairie.
- Majority (79%) supportive of the City’s goals to provide multi-modal transportation options.
- Majority (53%) supportive of the sidewalk policy – some common themes in the comments: no sidewalks on dead-ends/cul-de-sacs, sidewalks not needed on both sides of the street in some areas.
- Concern about the loss of prime agricultural land.
- Concern that taxes are rising, fear that they will rise more.

• Comments that stood out:

- No low-income housing – they don’t pay taxes and they bring crime
- Promote the adopted plan at Corn Fest – there are still many people in the City who don’t know this effort is occurring or what it means to the City

Q1 Do you have any suggestions or changes for the proposed land use map, policies and actions, specifically regarding Neighborhood Residential areas and design guidance? (see the board below)

Answered: 33 Skipped: 11

#	RESPONSES	DATE
1	There has to be TRUE affordable housing - not subsidized but also not cost prohibitive. Places don't need to be huge. Safe walking does NOT have to include sidewalks everywhere. They make the streets more narrow which makes it more difficult for vehicular traffic (especially in the winter if the streets are plowed well/properly).	5/27/2019 7:14 PM
2	I think we need to plan for more green space as the housing development areas are very crowded. We don't need it that densely populated.	5/14/2019 7:49 PM
3	I suggest "communities" of 4plex buildings(homes) with a common manager and maybe a community park or building for gatherings.	5/6/2019 12:55 PM
4	Storm drains in roadway should not be parallel to the road and curbing. Bicycle tires have an issue with this and it would help encourage cycling on the road vs. sidewalk	5/6/2019 12:45 PM
5	I support the "balanced neighborhood" idea. too many of our neighborhoods were built with only single family houses, non socio-economic diversity.	5/6/2019 12:35 PM
6	I hope the city manages to keep it's small town feel	5/6/2019 12:24 PM
7	Keep HIR overlay areas consistent in size with surrounding development	5/6/2019 11:42 AM
8	We like in rental and one very interested in mixed use redevelopment that is scaled appropriately to the historic district. I love seeing so much mixed use. We need multi-family but done sustainably for the long term.	5/6/2019 11:30 AM
9	Seems to follow Main Street standards where appropriate	5/6/2019 11:24 AM
10	In NW quadrant, would like to see neighborhood mixed use be assigned to item 6 appreciate the decision to be using 7 as this purpose.	5/6/2019 11:17 AM
11	To make sure the design don't look like every city, USA. I understand about somethings being consistent however we still need a sense of being unique.	5/6/2019 11:05 AM
12	FARM land needs to be protected! Where will WI grow the food for the NATION?? We are the dairy state. PLEASE don't let CH take over.	5/6/2019 10:56 AM
13	Promote multi-income, multi-generational neighborhoods	5/6/2019 10:52 AM
14	Need daycare in /near apt complex near grade schools. High worker #1 of business	5/6/2019 10:48 AM
15	It seems like this has already been decided.	5/5/2019 1:24 PM
16	Provide incentives or rebates for purchasing rain barrels, low-flow toilets, installations of rain gardens and pallinator areas in yards to save water and stem slow of rain into gutters and streets.	5/5/2019 1:21 PM
17	Rain gardens in neighborhood parks, especially in areas where there is standing water (Misty Meadow Park)	5/5/2019 1:19 PM
18	I think it is important to revamp some of the older multi-family residential housing. We own our home, but are blocks away from an older multi-house, the rest of the neighbor appears to be improving while that one continues to deteriorate.	5/5/2019 1:18 PM
19	Neighborhoods should be mix, but not lower income housing. Not more apts. safety should be kept in mind always. Adding a sunfish pond to the community would be great. more traffic and safety issues to be address.	5/5/2019 1:14 PM
20	I appreciate the direction of inclusive/diversified housing options planned for all income levels and 801 housing in SP to be available for all.	5/5/2019 1:03 PM
21	No sidewalks on residential streets. No mixed use in established neighbors	5/5/2019 12:57 PM

22	1. Thank you for having these meetings, although I know any "input" from these meetings will not really be considered.	5/3/2019 1:06 PM
23	I like the idea of creating neighborhoods; however, city planning tends to favor disruptive business over establishing the community.	5/3/2019 12:57 PM
24	Encourage more affordable housing-resist push from high end builders and large commercial real estate developer to create expensive housing	5/3/2019 12:35 PM
25	Break up those ugly ponds-exterior design to use best practice for A&E design-to avoid redundancy.	5/3/2019 12:31 PM
26	1 & 2 family duplex type homes are a great benefit to both families and a compromise on expenses.	5/3/2019 12:28 PM
27	We need affordable single family homes-RANCH STYLE possible. I host holidays and my aging parents can't do all the 2-story, bi-level, tri-level homes. Make lots quality not jammed together with nowhere to put snow!	5/3/2019 12:25 PM
28	Densely populated housing/multi-family units are not desirable in single family housing neighborhoods	5/3/2019 11:08 AM
29	What are the impacts on school-where are now school sites?	5/3/2019 10:59 AM
30	There should be single family neighborhood not including apartments duplex 4plex different multi-family.	5/3/2019 10:51 AM
31	1. Keep the Prairie in Sun Prairie-confine dense areas to downtown. 2. What does balanced mean? Need to have ratio on % of apartments rather than base it on total number of units. 3. What city will we look like in 2040?	5/3/2019 10:48 AM
32	All these plans are find. Roads/streets are in terrible shape. Fix streets Broadway, stonehaven and many more.	5/3/2019 10:02 AM
33	Keep low income housing out of the mix of residential planning. This brings a entire slew of new problems to address. It also bring crime to the city. We don't want. The design should be a mix of more condo units, duplexes, and single homes. No big or small or low income apartments.	5/2/2019 3:36 PM

Q2 Do you have any suggestions or changes for the proposed land use map, policies and actions, specifically regarding Commercial and Employment areas and uses? (see the board below)

Answered: 22 Skipped: 22

#	RESPONSES	DATE
1	You have to figure out parking!! I live downtown and it's a nightmare at times. And, with additional construction, it's getting worse. Whether you want them to or not, people will drive. Also, as some of the population ages, it would be great to have housing that matches that - not everything has to be two or three story!	5/27/2019 7:14 PM
2	Try to incorporate more of the "prairie" feel into the commercial areas as that is what brought people here to begin with.	5/14/2019 7:49 PM
3	1st Industry then housing you are pushing the cart before the horse. Too much too fast.	5/6/2019 12:55 PM
4	Can the city please pay more attention to location of grocery stores? West side is glutted but other neighborhoods don't have any	5/6/2019 12:39 PM
5	Traffic management will be a concern	5/6/2019 12:24 PM
6	Support employment and multi-modal transportation opting	5/6/2019 11:42 AM

#	RESPONSES	DATE
7	flexible is a biggie and being able to take advantage of relocations attraction opportunities as they arise.	5/6/2019 11:24 AM
8	More mindful street design and control for safety-more side walks, walk signals, bike access	5/6/2019 10:52 AM
9	It seems like this has already been decided. Many new housing sites, but employment opportunities are weak now.	5/5/2019 1:24 PM
10	Encourage business park companies to join or become WI sustainable businesses, to do energy audits of buildings and use PACE to make improvements in their facilities	5/5/2019 1:21 PM
11	Like idea of building downtown	5/5/2019 1:18 PM
12	I think we should address more industrial growth. Attract more business. keep mind on how much land SP is losing every single day. we need to preserve our land also.	5/5/2019 1:14 PM
13	Would love to see even more restaurant and shopping options in the community	5/5/2019 1:03 PM
14	Should be centered with access and aligned with retail and businesses to support homes.	5/3/2019 12:57 PM
15	More healthy menu restaurants. Limit fast food-it's killing us! Careful and judicious approval of new business-ie. residential neighborhoods should not have bars, late night businesses etc. adjacent to them.	5/3/2019 12:35 PM
16	no issues	5/3/2019 12:31 PM
17	The 4 story buildings are for people who don't want to commit to the welfare of the community.	5/3/2019 12:28 PM
18	Employers can look to provide relocation packages to attract people to stay in our community.	5/3/2019 12:25 PM
19	More businesses that manufacture and not service only type jobs.	5/3/2019 11:08 AM
20	Business Park should be main area for commercial tech, small manuf. only pay their share limit tif from city	5/3/2019 10:51 AM
21	Disagree that bring people and company/industries will come. Sun Prairie has no real industry.	5/3/2019 10:48 AM
22	We need to save our land, but I respect the right for business to buy up land. They city should attract more companies to establish HQ, or warehouse/distribution centers to the area. It brings all kinds of jobs and revenue to the area. On the concern of stores, we need a Trader Joes as an alternative grocery store. We have a great growth of a variety of stores and restaurants going strong. More development on the east side as stores, and restaurants.	5/2/2019 3:36 PM

Q3 Do you have any suggestions or changes for the proposed land use map, policies and actions, specifically regarding Mixed Use areas? (see the board below)

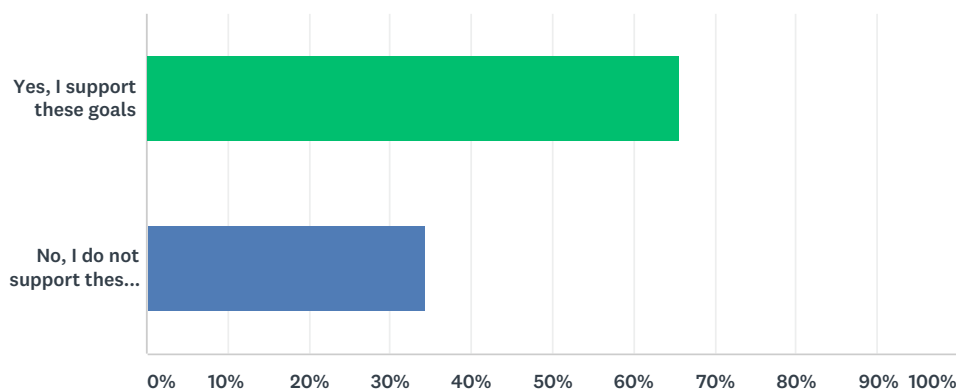
Answered: 20 Skipped: 24

#	RESPONSES	DATE
1	I truly don't want all the buildings to look the same. And with everything right up to/on the sidewalk, it feels crowded and not pedestrian-friendly.	5/27/2019 7:14 PM
2	I think we need to keep the mixed use buildings to 3 stories as we lose the feel of the town if we go taller.	5/14/2019 7:49 PM
3	**Safety is a BIG issue. Traffic & 1st responders** Use "CS" (common sense). long term and older cities are being thrown under the bus!!!!	5/6/2019 12:55 PM
4	Access to drives from major roads needs careful thought	5/6/2019 12:39 PM

#	RESPONSES	DATE
5	One of the selling points of our city is the large number of parks. Would like to see more attention to how people access these areas, walking, biking on driving.	5/6/2019 12:35 PM
6	Mixed use does not mean apartments--> residential to me. It's community services and small businesses to support neighborhoods.	5/6/2019 11:17 AM
7	Small neighborhoods should be created.	5/6/2019 10:56 AM
8	More mixed-use when high density housing is added to residential neighborhoods-promote "walkable" destinations for families	5/6/2019 10:52 AM
9	It seems like this has already been decided.	5/5/2019 1:24 PM
10	I think we should address more industrial growth of business and stores, restaurants are going great. too much apt building and attracting lower income people to the city making us a little Chicago land.	5/5/2019 1:14 PM
11	Love the focus on bike lanes and pedestrian areas, further development of parks (splash pads) etc.	5/5/2019 1:03 PM
12	Too much mixed use areas already let established neighbors stay as is	5/5/2019 12:57 PM
13	Something besides national/international chains to develop a sense of ownership and community.	5/3/2019 12:57 PM
14	These need to have safe walking and bike paths.	5/3/2019 12:35 PM
15	needs careful discussions	5/3/2019 12:31 PM
16	We are not looking out for the generation above 55 yrs.	5/3/2019 12:28 PM
17	Too much lighting with all this! Good luck sleeping with street lights, business lights, security measures etc.	5/3/2019 12:25 PM
18	Mixed use is good if not too many multi unit townhomes.	5/3/2019 11:08 AM
19	Limit large apartment in Main St. area talking away from city small town.	5/3/2019 10:51 AM
20	No low income housing or apartments. They don't contribute to paying taxes or supporting this growing city if they rent. They also bring crime and problems to the city which you have to then address.	5/2/2019 3:36 PM

Q4 Are you supportive of the City's goals to make housing a priority and ensure that all residents have safe and affordable housing options in Sun Prairie. This includes providing a mix of housing types throughout the City. See the Housing Board below (and/or Chapter 7).

Answered: 35 Skipped: 9



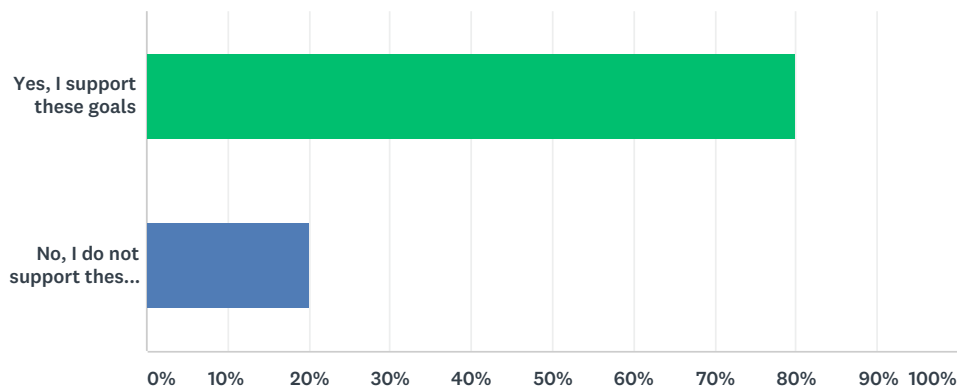
ANSWER CHOICES	RESPONSES	
Yes, I support these goals	65.71%	23
No, I do not support these goals	34.29%	12
TOTAL		35

#	DESCRIBE ANY CHANGES YOU WOULD PREFER IN THE PLAN:	DATE
1	This is not a strong yes because I don't trust you! Do something about smaller lots, single family homes, ... And don't ever allow a design like I have in my condo - with my neighbor's garage underneath my home!!! [Truly, please "outlaw" that.]	5/27/2019 7:20 PM
2	I agree that residents need affordable housing but feel we are growing too fast because now the market is good.	5/14/2019 7:52 PM
3	CR#2 comments again ! Maintain historical buildings. Do not demolish any more. Hebl (?) hotel NEEDS to be SAVED. *East SP needs MAJOR road work	5/6/2019 12:59 PM
4	Don't put it on main thoroughfares that have high truck traffic or are at a lighted intersection-the noise echoes through the "canyons".	5/6/2019 12:49 PM
5	The city and the school district need to work together. The city needs to pay attention to school district boundaries. Token Springs is a Cadillac, CH bird is a Yugo, and needs a lot of help!	5/6/2019 12:42 PM
6	This is crucial to having a balanced city with no "bad side/poor side" of town.	5/6/2019 12:37 PM
7	I appreciate the care to minimize impact on existing residents and the environment. Public transit and better bicycle paths will become increasingly important.	5/6/2019 12:33 PM
8	Keep high intensity residential in line with surrounding existing development	5/6/2019 11:43 AM
9	Spread out the multi-family. I'm concerned that so much of the large scale multi-family housing is concentrated in small areas. I like seeing it spread out.	5/6/2019 11:32 AM
10	Please provide tax breakout per type of community so the % toward tax benefit as a whole)	5/6/2019 11:25 AM
11	Would like less dwelling units in the NW quadrant. More 3-4, 5-10 rather than 21-40 and 41-204. I expect more restaurant and shops in areas with proposed housing additions.	5/6/2019 11:21 AM
12	Making sure income housing that is affordable isn't put in a particular part of the city to create certain neighborhoods just to please another group of people. But that the housing is incorporated in all neighborhoods.	5/6/2019 11:06 AM
13	I don't see that happening in this plan.	5/6/2019 10:57 AM
14	Transit, services, plans for connecting diverse families within a neighborhood-city supported block parties, community centers, etc. -opportunities to get to know one another	5/6/2019 10:53 AM
15	the more homes and apartments constructed the more schools, roads, services needed! Senior citizens won't be able to remain in their homes or even in Dance County. Do we really need a more aggressive growth plan than already exists? Especially more apartments.	5/5/2019 1:26 PM
16	Continue to build affordable, multi-family dwellings.	5/5/2019 1:21 PM
17	more mailings and informational stuff. it was hard to find a master overview map on the planning stage.	5/5/2019 1:16 PM
18	Don't decrease the value of my single-family housing area by adding apt!	5/5/2019 1:05 PM
19	My taxes should not go up so someone can live in Sun Prairie-example-higher cost for police, fire, public works, etc. Time to stop apartments, low cost housing, work force housing etc.	5/5/2019 12:58 PM
20	I believe every city needs more 55 and over affordable housing and single family housing for lower middle income families \$180,000-\$280,000 price range.	5/4/2019 1:16 PM
21	Stop the over building of multi-family units	5/3/2019 1:06 PM
22	Affordability is important. Multi-family has been overbuilt.	5/3/2019 12:58 PM
23	Embrace tiny houses and the creation of multi-units from existing houses :)	5/3/2019 12:42 PM
24	Ranch style housing! Stairs with infants, small children aging family visitors doesn't work!	5/3/2019 12:27 PM

#	RESPONSES	DATE
25	None the additional policies (in cold) are good changes to the plan	5/3/2019 10:59 AM
26	Flexibility in zoning with current housing ordinances	5/3/2019 10:57 AM
27	Limited growth so not overwhelming tax base green space not develop every vacant land	5/3/2019 10:52 AM
28	Not low income or apartment building.	5/2/2019 3:52 PM
29	Do keep parking in mind. So that there is enough off-street parking (especially in areas where there are storefronts, so that customers have a place to park for the business).	5/2/2019 1:09 PM

Q5 Are you supportive of the City’s goals to provide multi-modal transportation options to connect all residents to jobs, services and other regional amenities? This includes things like bike lanes and paths, sidewalk construction, and the upcoming launch of an express transit route between Sun Prairie and the City of Madison. See the Mobility & Transportation Board below. (and/or Chapter 8).

Answered: 35 Skipped: 9

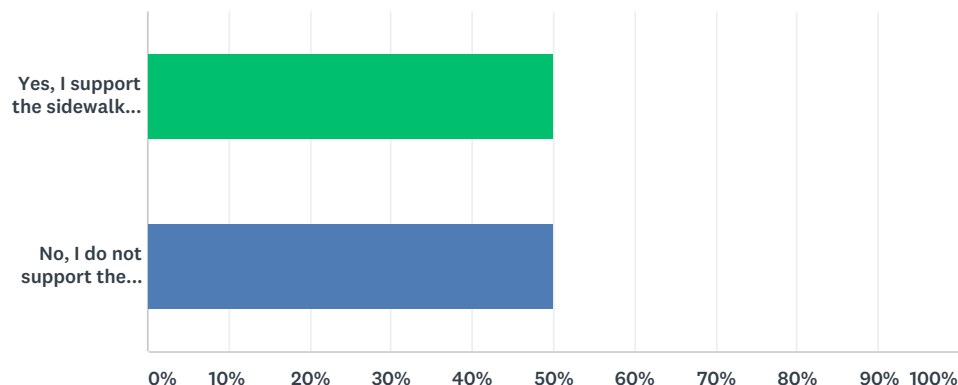


ANSWER CHOICES	RESPONSES
Yes, I support these goals	80.00% 28
No, I do not support these goals	20.00% 7
TOTAL	35

#	DESCRIBE ANY CHANGES YOU WOULD PREFER IN THE PLAN:	DATE
1	Again - a weak "yes". How about a cost-effective way just to get thru town, to the west side of Sun Prairie - since that is where everything is going?!	5/27/2019 7:20 PM
2	[write crosses out sidewalk construction] Not for all. Bus transportation needed	5/6/2019 12:59 PM
3	Why the heck is everybody funneling bus routes through the Isthmus when the working-class jobs are on the perimeter? Talk to Metro about access to jobs other than UW and offices.	5/6/2019 12:42 PM
4	Absoltely Not	5/6/2019 12:22 PM
5	It's about time!	5/6/2019 11:32 AM
6	The park and ride is not convenient for people that need.	5/3/2019 12:29 PM
7	no transit route	5/3/2019 10:52 AM
8	No on road biking as it cause a safety concern to drivers. If it's on the road it should be separated with a barrier. I'm in favor of multi use paths or trails. Add more lanes on Hwy 19 until past Gus dinner. Widening Hwy N from I-94 and Egry Road. Add traffic lights or roundabout at St. Alberts the Great Drive and Hwy C and the same at Stonehaven Drive and Hwy C. Also, add speed boards on Hwy C near these intersections. To many fast drivers. This needs to be done sometime soon. Mostly on the 2500 to 1700 block of Stonehaven Dr. and now with a schools built there are to many fast drivers zipping up and down. You need a roundabout or narrow island at the bottom of the hill on Stonehaven near St. Patrick Way. Also, speed boards added all over Stonehaven. This needs to be done now.	5/2/2019 3:52 PM

Q6 Are you in support of the proposed sidewalk and multi-use path policy requiring sidewalks/paths as summarized below? See the “Mobility & Transportation” board below for more details, including exemptions to this policy. 1) On both sides of all new and reconstructed public streets, including cul-de-sac streets and eyebrows; 2) On one or both sides of rehabilitated streets (pavement replacement only), when it is determined to be in the public interest by the City Engineer and City Planner; and, 3) Along private streets, when it is determined to be in the public interest by the City Engineer (or designee).

Answered: 36 Skipped: 8



ANSWER CHOICES	RESPONSES	
Yes, I support the sidewalk policy	50.00%	18
No, I do not support the policy	50.00%	18
TOTAL		36

#	DESCRIBE ANY CHANGES YOU WOULD PREFER IN THE PLAN:	DATE
1	Absolutely not!! Sidewalks create a LOT of work for homeowners and IN MANY AREAS are rarely, if ever, used. HUGE expense - time/energy - for nothing (except for a more narrow street, which is not helpful)!!!	5/27/2019 7:20 PM
2	You don't need sidewalks on dead-end streets or cul-de-sac's - that is wasting taxpayer money.	5/14/2019 7:52 PM
3	No cul-de-sac. this initiative NEEDS to be on case by case basis. How are the ones already in place being maintained including snow removal etc.	5/6/2019 12:59 PM
4	High traffic or area where there is fast traffic could have wider sidewalks with "bike lanes" on them.	5/6/2019 12:49 PM
5	I would support the sidewalk policy if I thought the alder-critters were paying attention to the community! The Trapp St. neighborhood didn't need it! Other neighborhoods do. Alders came across like steam-rollers	5/6/2019 12:42 PM
6	[writer crosses out #1 and circles #2] I don't agree both sides need sidewalks/cud-de-sacs. I love the installation of sidewalks in older neighborhoods, especially near schools and parks. I am grateful the city takes on these costs.	5/6/2019 12:37 PM
7	Most of the complaints I hear relate to the increased work of snow removal and increased taxes. I feel that sidewalks make for better neighborhood.	5/6/2019 12:33 PM
8	2) & 3) Allow for neighborhood input in addition to city planner/engineer	5/6/2019 11:43 AM
9	The way the sidewalk policy is being implemented or dead-ends or cul de sacs doesn't make sense. I'd like to see sidewalks on every thoroughfare and small street but not the dead ends-that's a waste of tax dollars.	5/6/2019 11:32 AM
10	Suggest adding speed bumps on St. Albert. Like the idea of a roundabout on Tower and Wilburn. Wish you would show prospect bike path and connectors on the large boards	5/6/2019 11:21 AM
11	(Bike Path) Would love to see the bike paths loop and connect. Very tree post "draw" for our a big city like Madison.	5/6/2019 11:02 AM
12	The current streets need to be maintained.	5/6/2019 10:57 AM
13	Maintain the paths once you make them!!!	5/6/2019 10:53 AM
14	Do need sidewalks for elderly. DUI folks who last license -Lighting at night for bikers	5/6/2019 10:49 AM
15	I support sidewalk development in new construction. I do not support required sidewalks in older developments or cul de sacs.	5/6/2019 10:45 AM
16	This is greatly needed, especially bike paths.	5/5/2019 1:26 PM
17	On street biking is not safe it not separate from vehicle traffic. How will this affect parking on residential streets. Sidewalks are not need to be redone on certain streets. Pissing off a lot of long time residence.	5/5/2019 1:16 PM
18	[write circles, "including cul-de-sac streets and"] Sidewalk on my circle (Walfriole?) is impractical. No one walks on it and it is uses for snow and fire hydrant.	5/5/2019 1:10 PM
19	multiuse paths through parks are fine. no sidewalks.	5/5/2019 12:58 PM
20	No proposed sidewalk	5/3/2019 1:06 PM
21	Do not put sidewalks in the cud de sacs or on both sides of a street when pedestrian traffic volume is low.	5/3/2019 1:05 PM
22	This has been highly inconsistent and planning has not expressed the purpose or plan well.	5/3/2019 12:58 PM
23	This is a contentious topic and the mandate for sidewalks must take maintenance-such as access for snow removal by property owners-info account.	5/3/2019 12:42 PM
24	#1 & #2 yes, #3 no. Need more bike paths for bikers and runners	5/3/2019 12:31 PM

#	RESPONSES	DATE
25	We need to fix streets and not patch that only last 2 seasons.	5/3/2019 12:29 PM
26	More Uber, Lyft, etc. It's more door to door with no need to commute to bus stops etc.	5/3/2019 12:27 PM
27	32	5/3/2019 11:08 AM
28	#1	5/3/2019 10:57 AM
29	no cul de sac streets or private streets	5/3/2019 10:52 AM
30	Sidewalks are fine you don't need them on both sides of the road in certain areas or residential streets. Your sure doing a wonderful job by wasting tax payers money on dumb projects. Are certainly pissing off the long time residents who live here.	5/2/2019 3:52 PM

Q7 Please review the boards (below) on the following topics: Agricultural, Natural and Cultural Resources; Utilities & Community Facilities; Intergovernmental Cooperation; and Economic Development. Do you have any suggestions or changes for these other goals and high priority policies and action items? Please list the section title and your specific comment below:

Answered: 28 Skipped: 16

#	RESPONSES	DATE
1	Stop building!!! Sun Prairie doesn't need to get any bigger. What is the current rent vs. own ratio? The City is out of wack ...	5/27/2019 7:21 PM
2	I think you are forgetting the main point below "in balance with the growth of the City" as you are building residential housing but not enough green space. We need more Sheehan Parks to keep Sun Prairie what is it known for.	5/14/2019 7:54 PM
3	Angel and CH Bird and relatives would be very disappointed in what is happening in beautiful "Prairie in the Sun".	5/6/2019 1:00 PM
4	Natural area-Patrick Marsh. Once the city annexes "Hanley property", improve the shoulder or make a trail along Stone Quarry Rd. Difficult to get to unless by car.	5/6/2019 12:51 PM
5	I had a hard time figuring out the maps on the posters-and I'm usually pretty good at maps. I will have to study this some more.	5/6/2019 12:43 PM
6	I support retaining agricultural and natural lands. I don't know how this is balanced with the current economics of more and more farms being sold.	5/6/2019 12:38 PM
7	I am unsure what is meant by "opportunity zone" on the economic development map-but had it explained to me.	5/6/2019 12:33 PM
8	Emphasize Parks/green space/traits, continue to push OZ development and brownfield redevelopment	5/6/2019 11:55 AM
9	Ensure the local ED closely works with the WEDC and site selection group) to get more anchor business in vicinity (ie QBE and Amfam)	5/6/2019 11:26 AM
10	I like the idea to encourage more awareness of the natural areas around Patrick Marsh	5/6/2019 11:23 AM
11	Economic Development-a variety of employers other than retail	5/6/2019 11:07 AM
12	I would love to see downtown central to become an arts district. Small businesses developing art interest-like the flower shops-Meant to Bead-Photography	5/6/2019 11:04 AM

#	RESPONSES	DATE
13	Stotty family, Courad, and Chase families and others have been vital to this community. Sacred Hearts Church I believe was the 1st religious influences in SP. We need ethics and Common Sense	5/6/2019 10:58 AM
14	Loved the community facilities priority. Also loved the emphasis on green spaces and environmental concerns. This plan seems very thoughtful and progressive. LOVE IT!	5/6/2019 10:54 AM
15	Remember=WI-Dane Co. has the best soil in the world next to Ukraine=Don't build on all the land-you need nutrition in your food. Junk food isn't health sustaining	5/6/2019 10:50 AM
16	I was impressed by the detailed, forward thinking plans. I like the public transportation. I cannot stress strongly enough the importance of controlling urban sprawl! Dan County has some of the best soil and climate conditions for farming in the world. Developing this land for single family homes (duplexes too) is extremely short sighted. The wood sustainable is used liberally. Is this path truly sustainable.	5/6/2019 10:47 AM
17	The city should make a park of the plan the "s"-sustainable suggestions on the website and include use of permeable paving in as wary locations as possible to urge new development to include that as an option as well. SP utilities to WIPPE should be encouraged to move higher than 22% renewables in their energy choices. Limit travel and encourage in-fill as much as possible.	5/5/2019 1:24 PM
18	Save land and preserve them. More forestry type or parks. Trails. We need a sunfish pond stocked with fish. Something like what the Village of Deforest has.	5/5/2019 1:16 PM
19	sustainability-no mention made of waste disposal. what landfill resources will we have in next 20 years?	5/5/2019 1:10 PM
20	[writer crosses out all of the above and writes:] New High School. Run through on ironwood or near new school. Don't go through the Crescendo Drive neighborhood.	5/5/2019 1:06 PM
21	Let's keep as much field and agricultural and natural areas as possible for future generations employment.	5/5/2019 1:05 PM
22	Please start listening to the public. Stop being bullies and forcing things upon us. We pay the taxes. We should have a say in what happens and not the handpicked steering committee. This town is really no longer a pleasant place to live.	5/5/2019 12:59 PM
23	No one wants to move into an area only to have development done later. I don't know how this can be accomplished except to try to preserve some green space in each development.	5/4/2019 1:18 PM
24	[writer crossed out question] Need. Hank lights on Main St. Need diversity on City even with steering committee after committees.	5/3/2019 1:08 PM
25	Need more work with pot for SR-19 Park & ride lot(s) Improve communications with employers Note: Future hand use NW drawing is wrong-pence Lutheran elementary is wrong It is now: Peace Lutheran church and school. Please fix this, thanks.	5/3/2019 12:33 PM
26	The city needs to buy more land and save it for natural resources area or protective land. Make forest preserves, parks, and trails. I would like to see this. Also, I would like to see a sunfish pond or two added somewhere. Something large enough with pairs and cut outs for people to fish with stocked, sunfish, perch, bass, and walleye. For catch and release only pond or regulated DNR size of bag limit for urban pond fishing. Also, no motorized watercraft, but maybe big enough to put a certificated kayak or canoe in. Possible add a new bigger community center which could be use for different functions. Add a club and spa possible attach to the city's control of revenue to bring in. Make up agreement where we don't take or eat up other communities land. We are certainly absorbing a lot of other communities. As their governments boundaries are devolving. Make real sustainable agreements. Make the high tax on Madison area as we have to educate those people living outside of the city limits.	5/2/2019 4:01 PM
27	You've done an excellent job with the plan so far! Again, parking is a concern downtown. And I'm not sure if we need a huge, fancy historical facility. Are there really that many people interested in visiting a museum to support it financially?	5/2/2019 1:11 PM

#	RESPONSES	DATE
28	<p>Under Goal #1, Policies, I support 1, 2,4,5 and under Goal #2, 1-2, I support more community gardens but not just in Sheehan Park but in the neighborhood parks around the city that are underused and have excess grass that no one plays on. One is along Clarmar and is hardly ever used and could well have pollinator strips and native plantings or small garden plots for the homes that border the park. Under Actions: #1 I strongly agree and want to refer back to reinforce Goal 2/2. Building a public market now is a little too ambitious - there are other priorities with a higher value. I also support promoting CSA's and institutional local foods although year-round production is an issue with out the use of green houses. Natural Resources- General: #1 is extremely important; I agree with 2-8 and urge the planting as noted further along in the plan of native plants in both private yards and public parks. Reference with the city of Milwaukee did with their creation of 'pocket parks' in under utilized areas of the city. They put in playgrounds but also berry bushes, native pollinator spaces, and, along Fond de Lac Ave, water diversion for storm water from the street to the park. Sun Prairie could follow Milwaukee's lead on this creative initiative. I also support # 16-19. Under Water, #20, an important option not mentioned anywhere in the action items is the use of permeable paving. Last summer at one of the last meetings of the Library Advisory Task Force, the director of FEH Design, Dubuque, IA, gave a lengthy account of the value of permeable paving and his satisfaction with installing them in other places where he has worked. Permeable or pervious paving allows water to sink in and not run off and retains enough heat that snow often melts before it accumulates. The city of Middleton recently removed traditional paving from its Town Square and replaced it with permeable paving as a much better option to use. In regard to utilizing the Green Tier recommendations for erosion control, that is good but that is just a small part of what Green Tier participation would provide to the city. Utilities: Goal #1: I support these items (1-7). Under Electrical System, #17, WIPPI needs to incorporate more that 22% renewable energy as it moves forward. Even Madison's MGE has 30% as a target. Renewable resources are so affordable that WIPPI must have more options to go even higher in its projections. I support this section as the previous ones but want to emphasize support for #23-25, rebates on toilet replacement, purchase of rain barrels, compost bins, and home energy audits. Another area of concern is the use of coal tar paving. The city needs to find alternatives for its use and to encourage home owners to refrain from using it for driveways. Another area of recycling not mentioned is that of mattresses. The city of Madison ships old ones to a recycle center in Traverse City, Michigan. Perhaps Sun Prairie could work out an agreement to do the same. An area not covered under any of the categories in the proposed plan is that of sustainable business practices. Sustain Dane supports a Sustainable Business Network that could be a model for Sun Prairie. I know that Sun Prairie Utilities has a staff person who works with businesses on their energy use but a larger effort or initiative could be bring significant results in energy savings.</p>	5/1/2019 3:32 PM